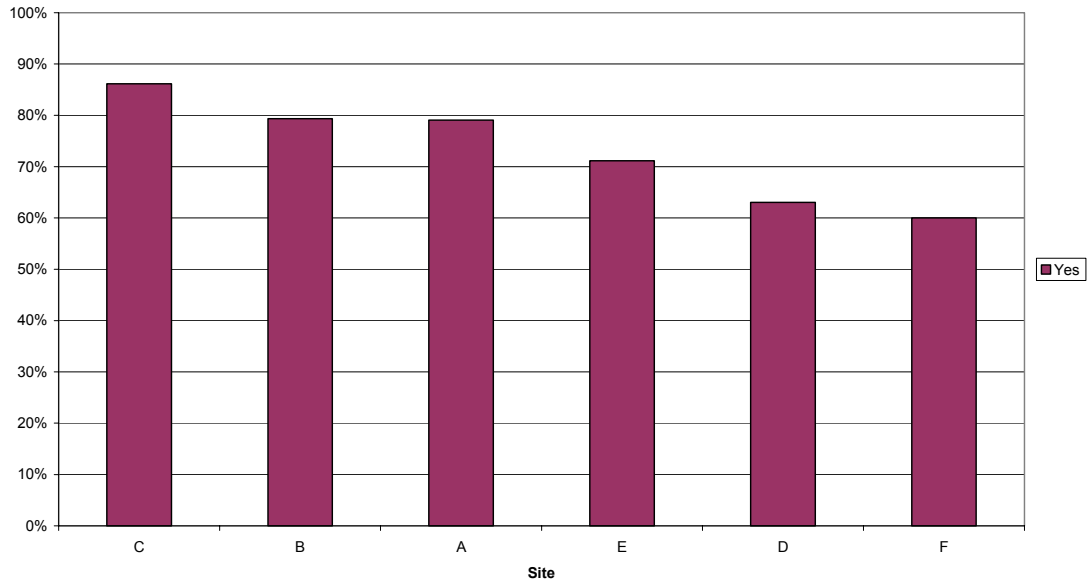
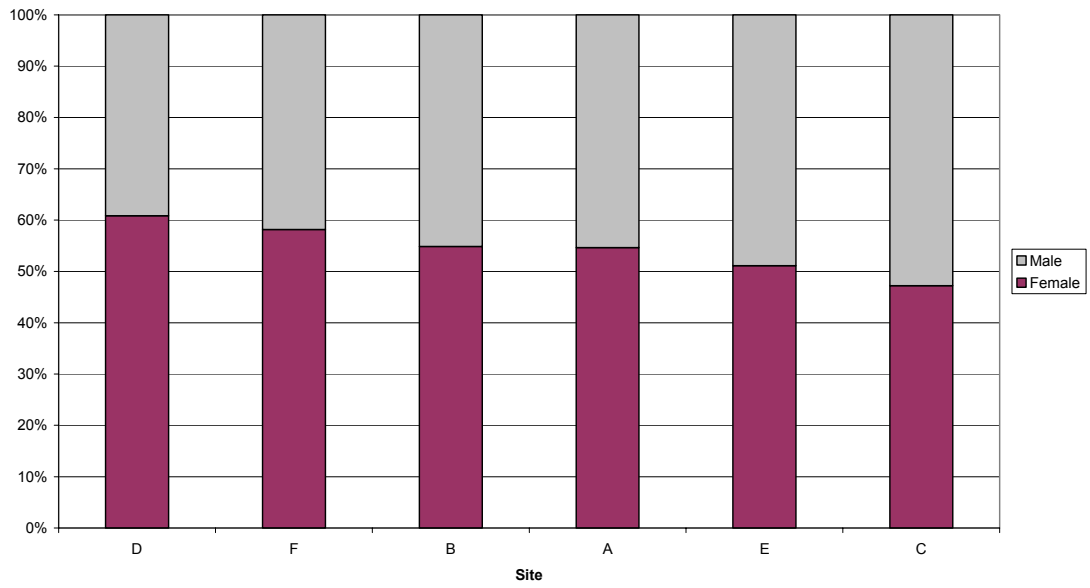


**Support for Informal
Carers of Older People:
Analysis of the Carers
Survey**

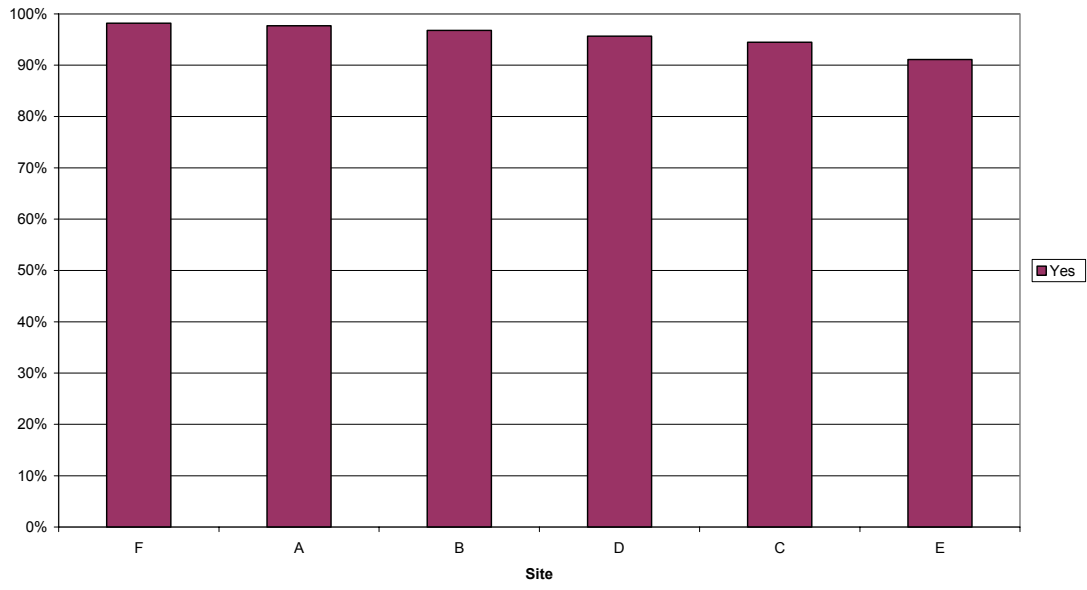
Q1: Do they live with you?



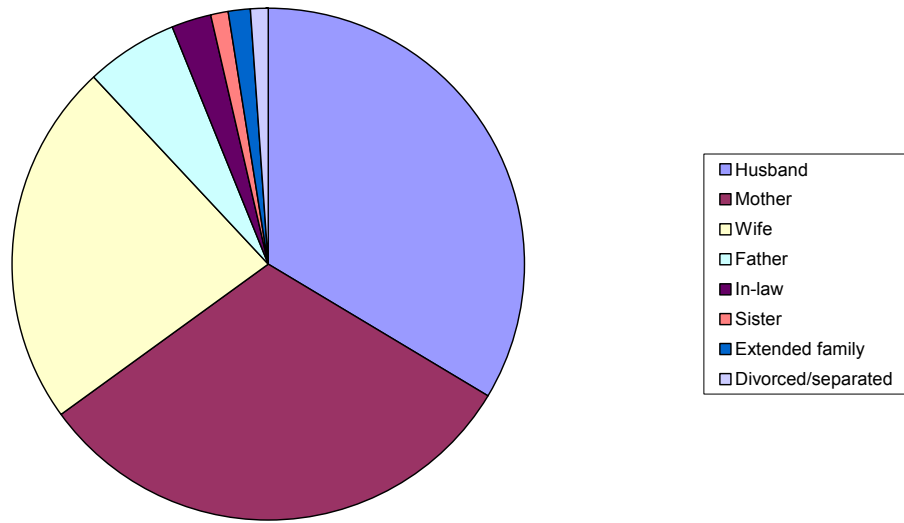
Q2: Are they a man or woman?



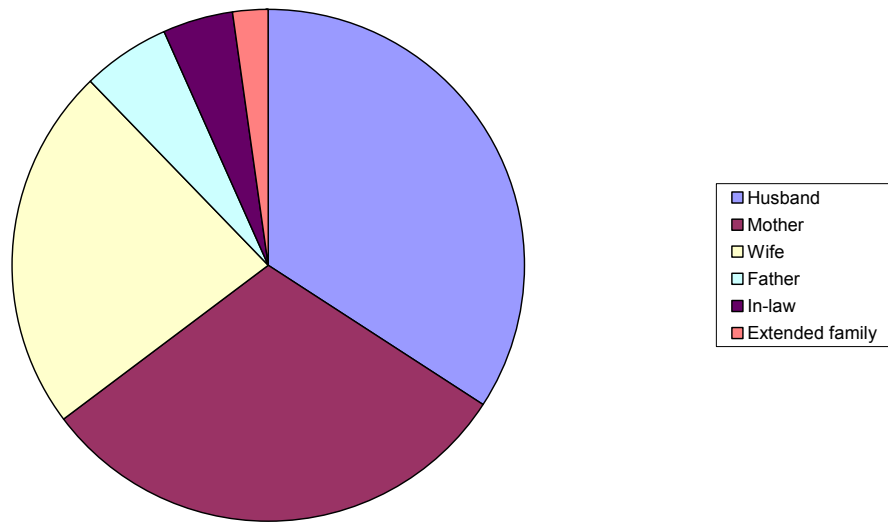
Q3: Are they related (or married) to you?



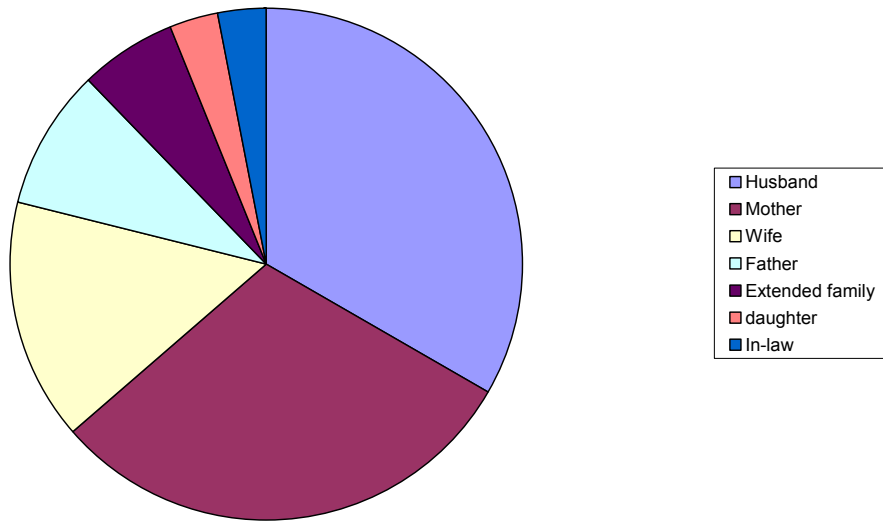
Q4: If so, how are they related (site A)



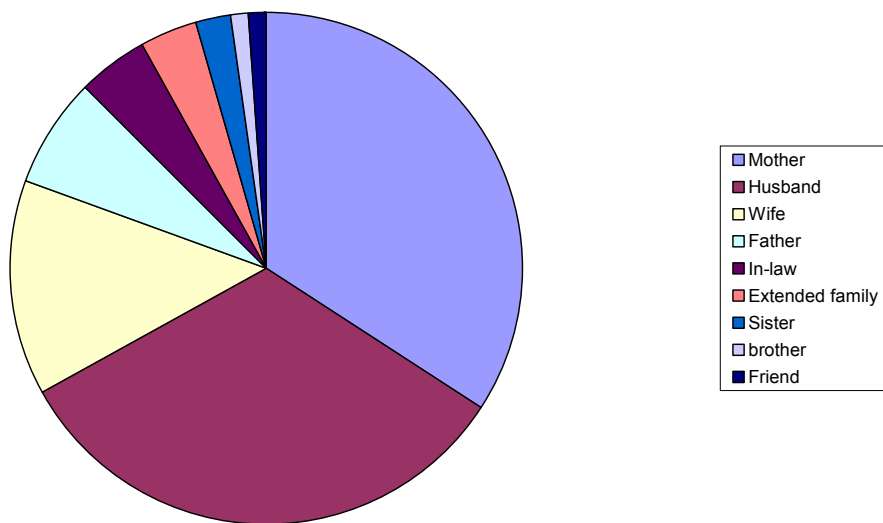
Q4: If so, how are they related? (Site B)



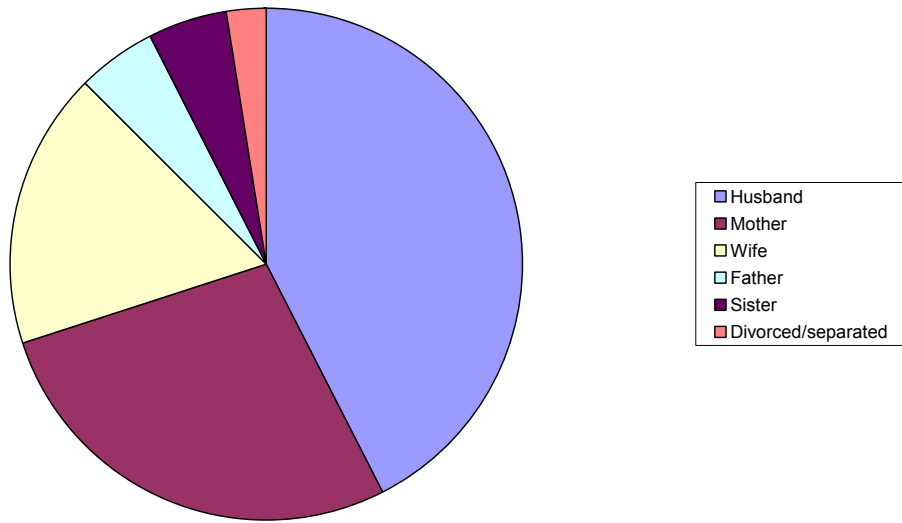
Q4: If so, how are they related? (Site C)



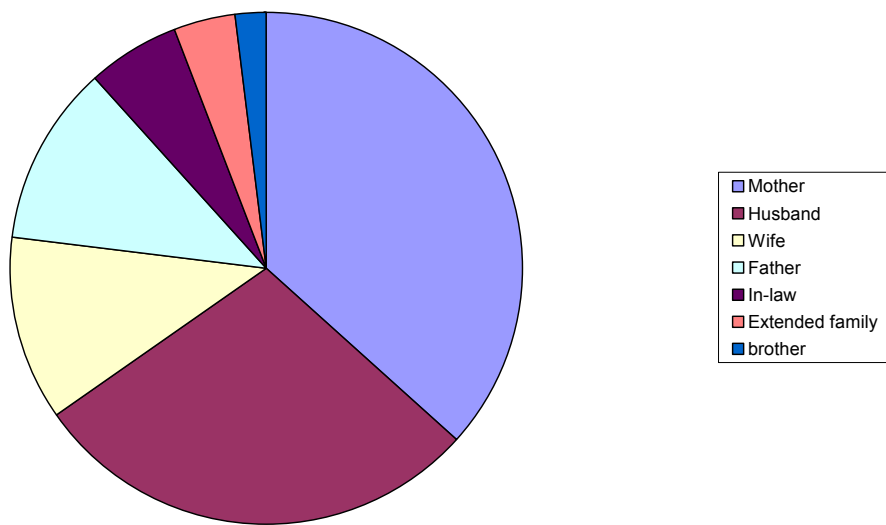
Q4: If so, how are they related? (Site D)



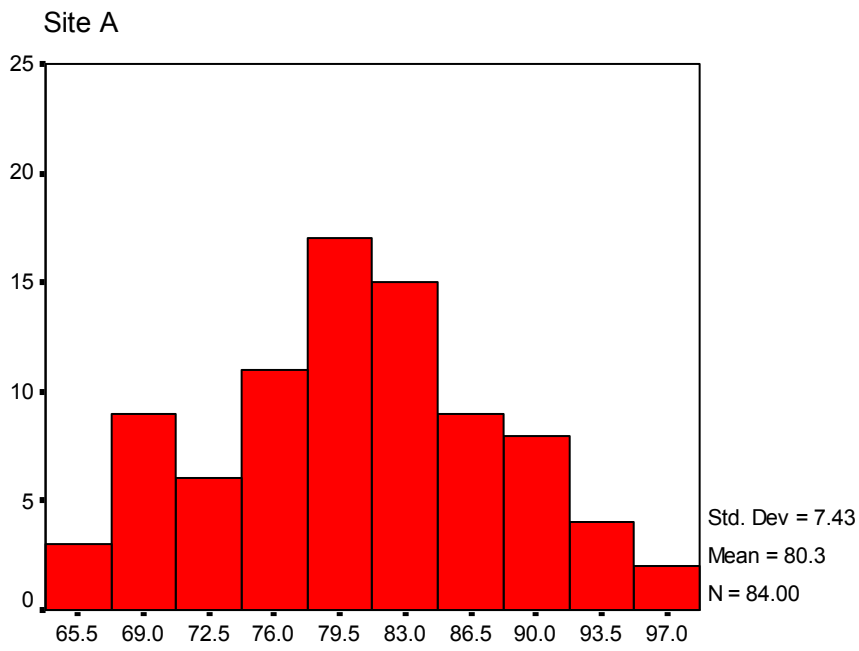
Q4: If so, how are they related? (Site E)



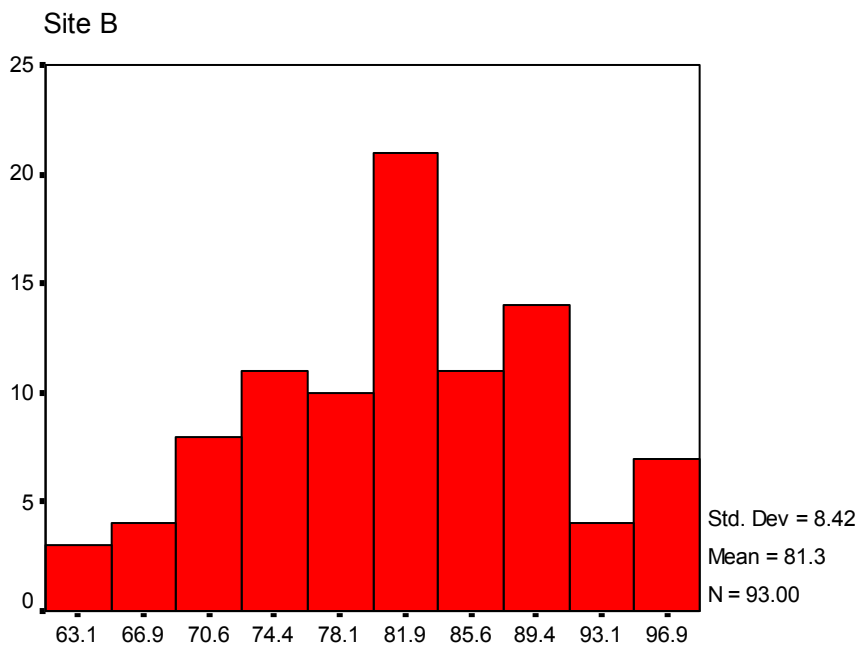
Q4: If so, how are they related? (Site F)



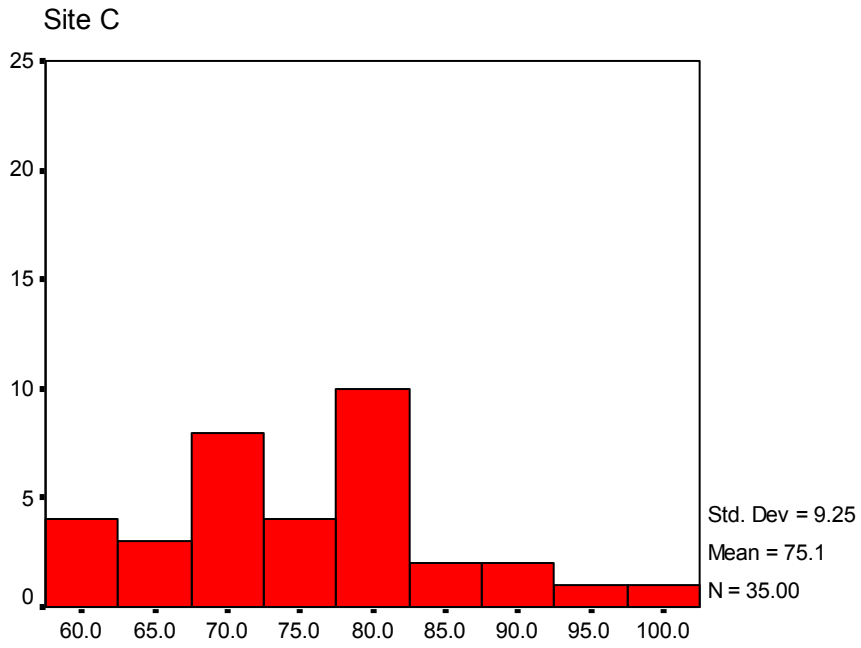
Q5: How old are they?



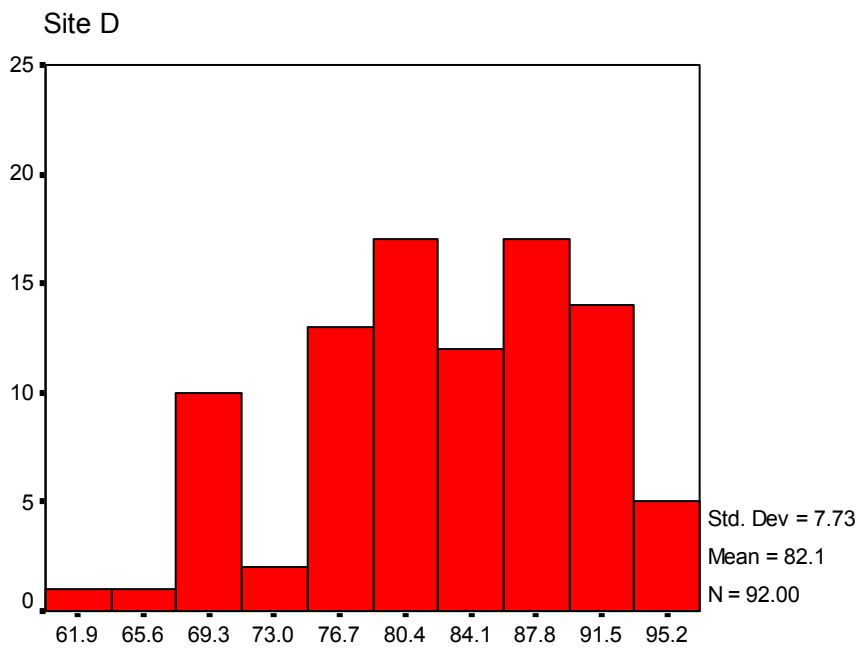
Q5: How old are they?



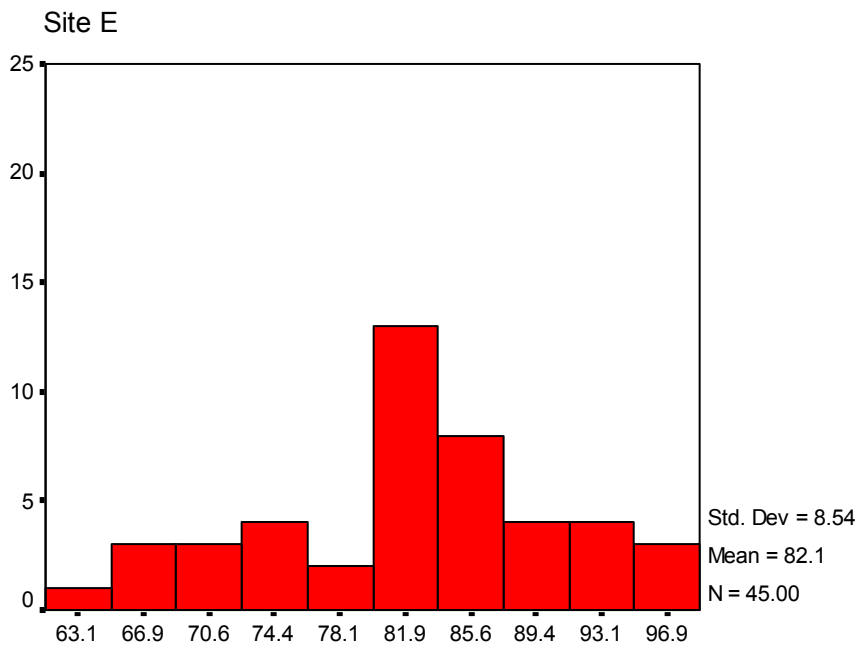
Q5: How old are they?



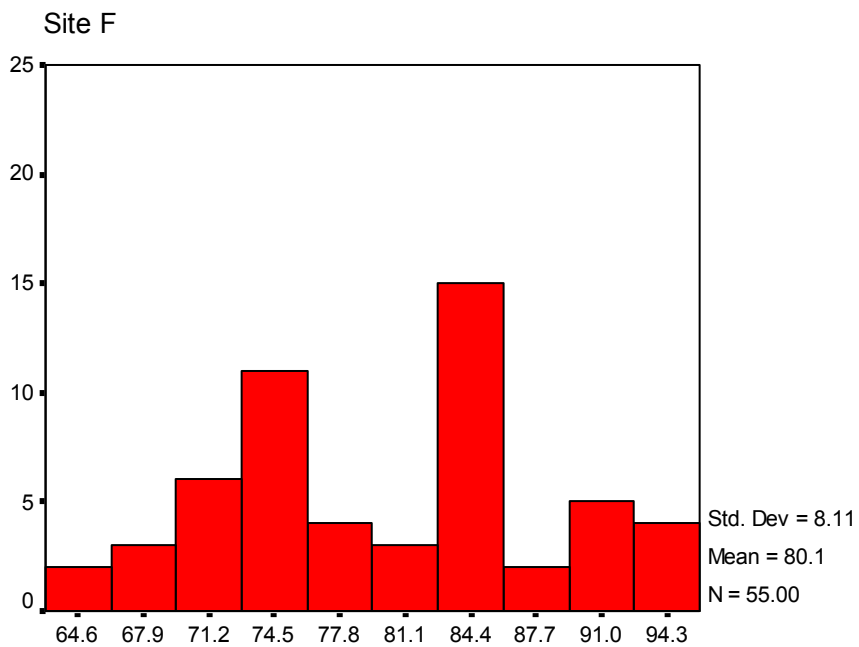
Q5: How old are they?



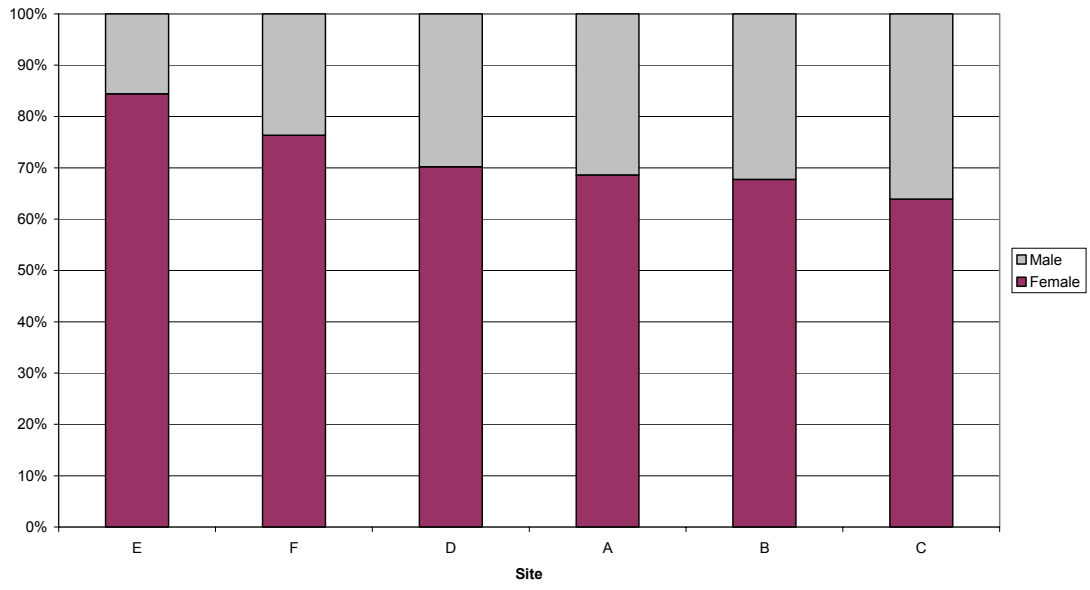
Q5: How old are they?



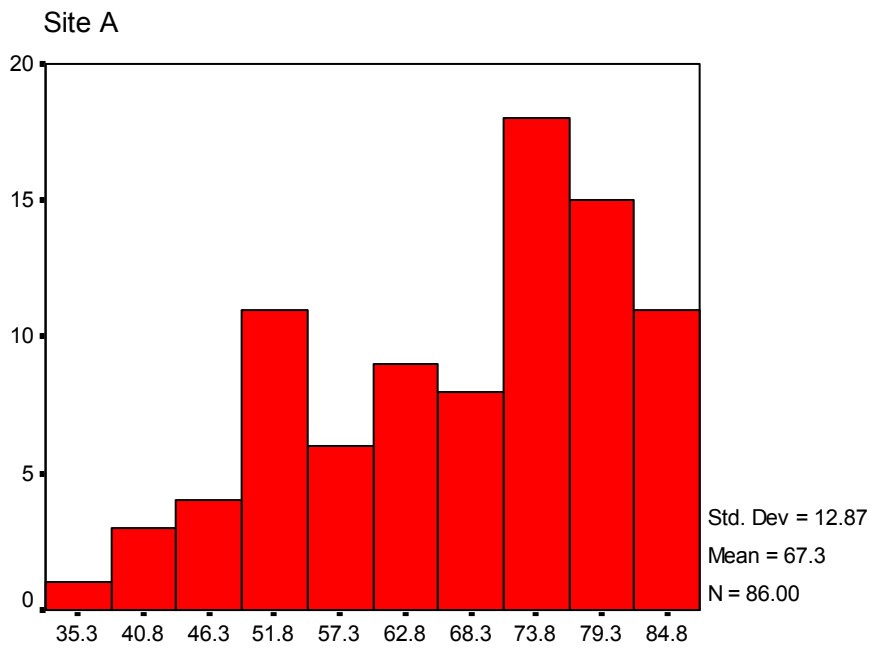
Q5: How old are they?



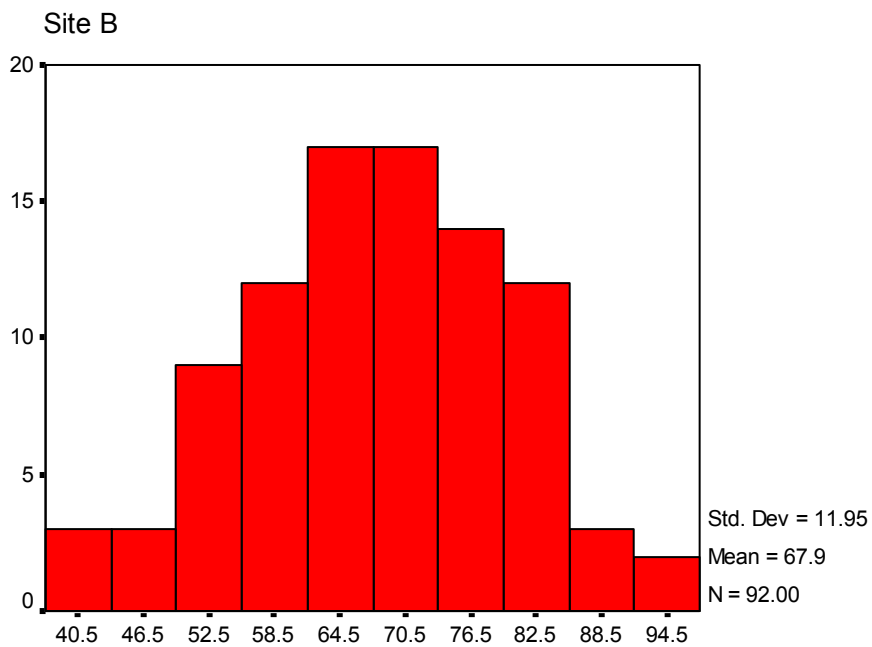
Q6: Are they a man or a woman?



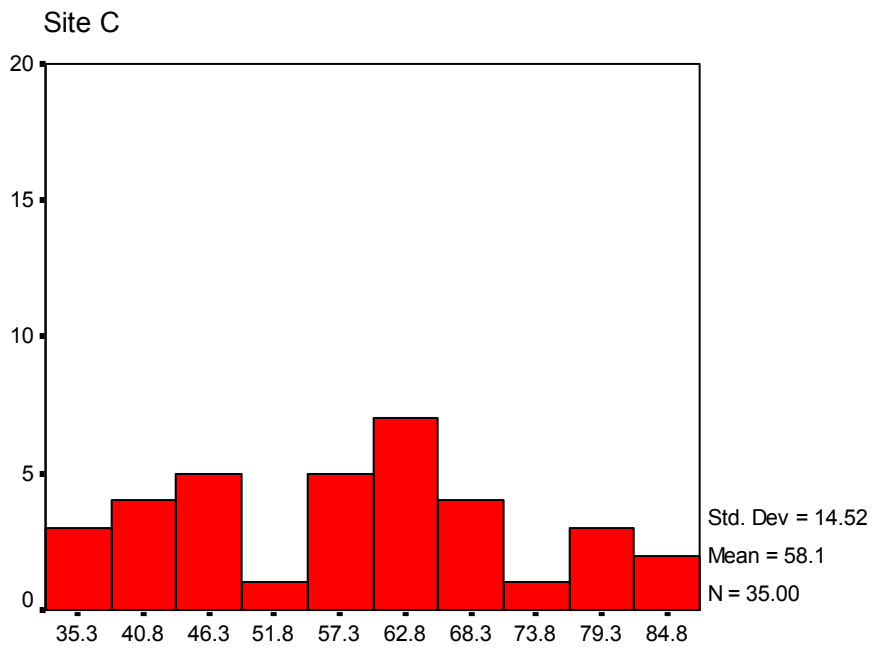
Q7: How old are you?



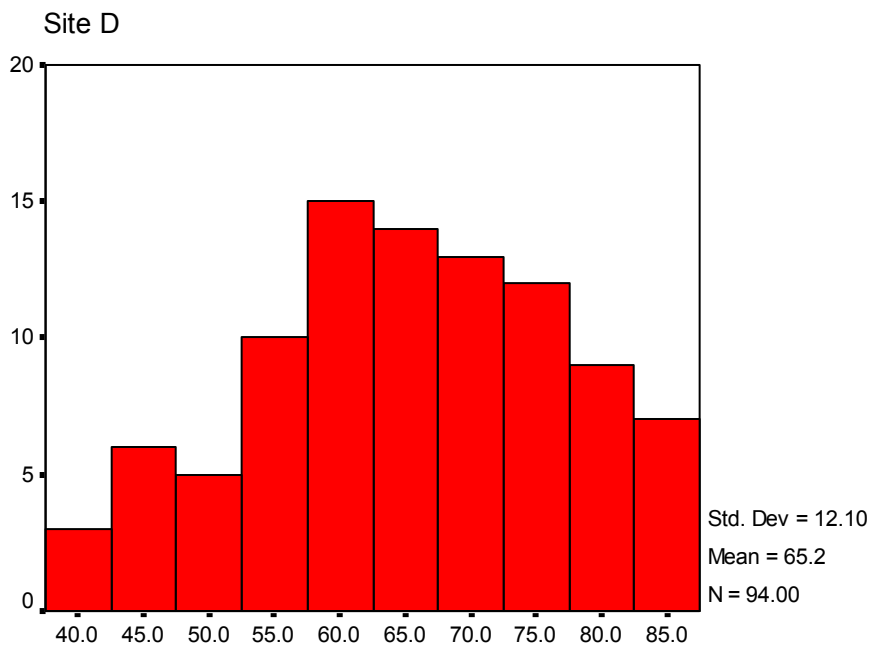
Q7: How old are you?



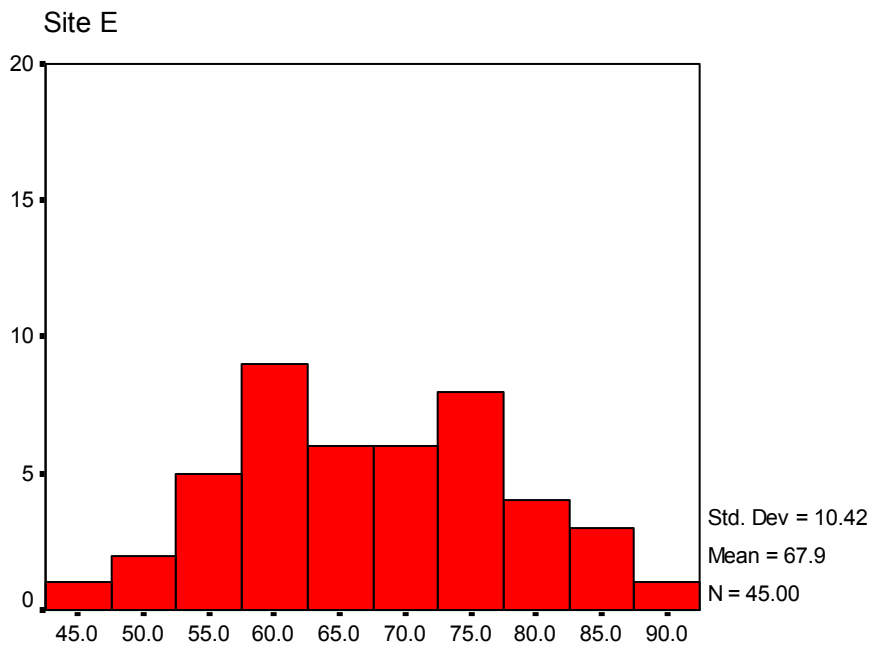
Q7: How old are you?



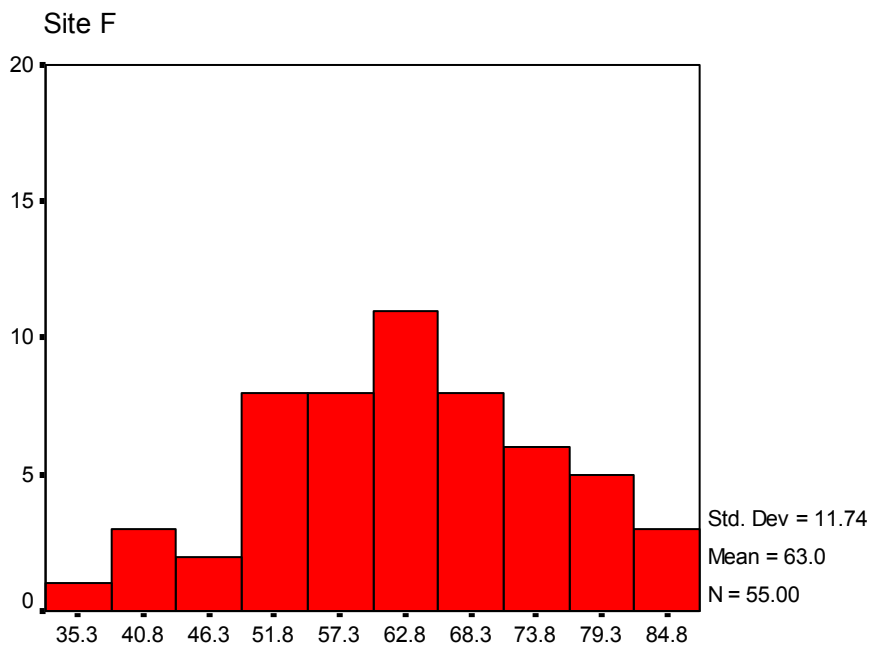
Q7: How old are you?



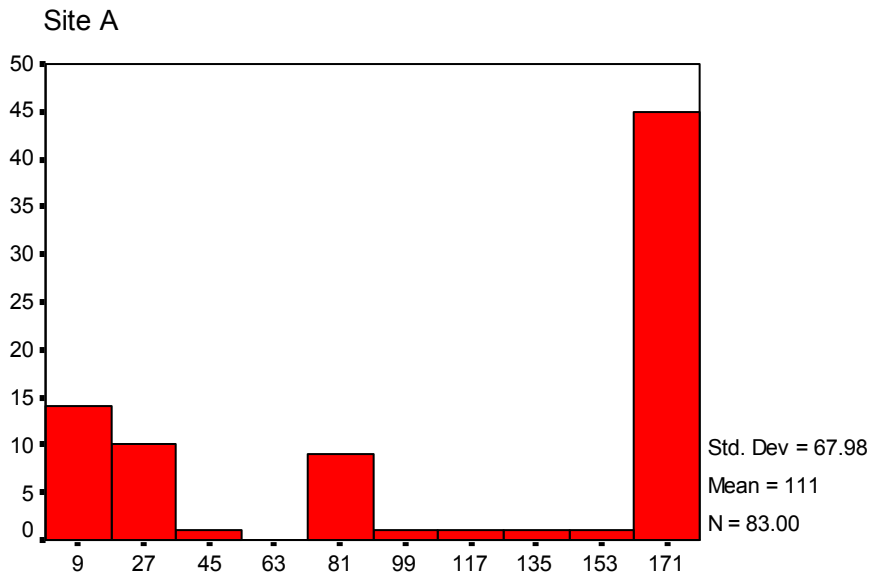
Q7: How old are you?



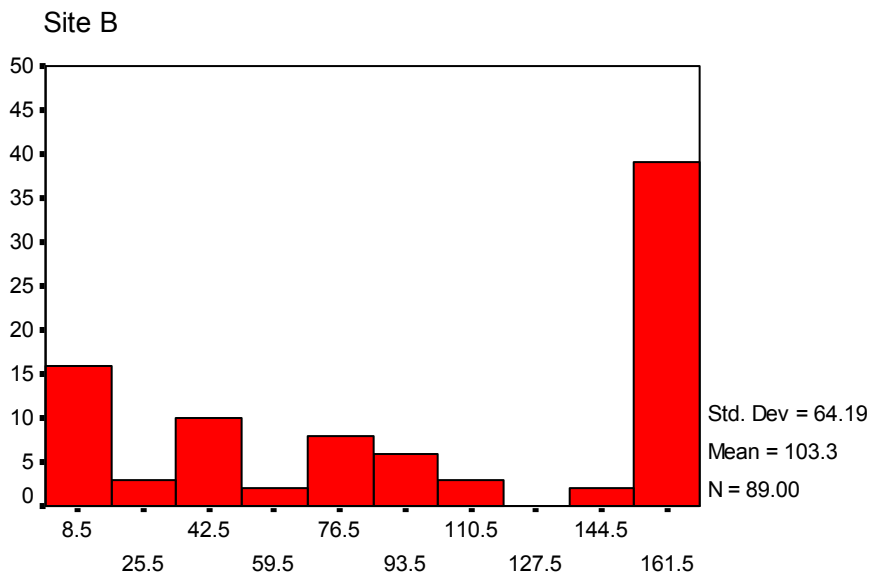
Q7: How old are you?



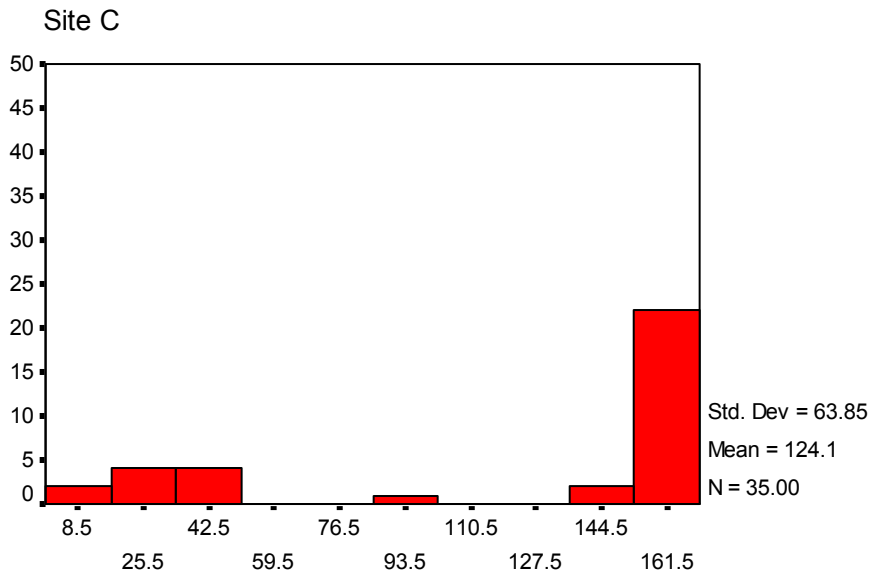
Q8: On average, how many hours of care do you give to the person each week?



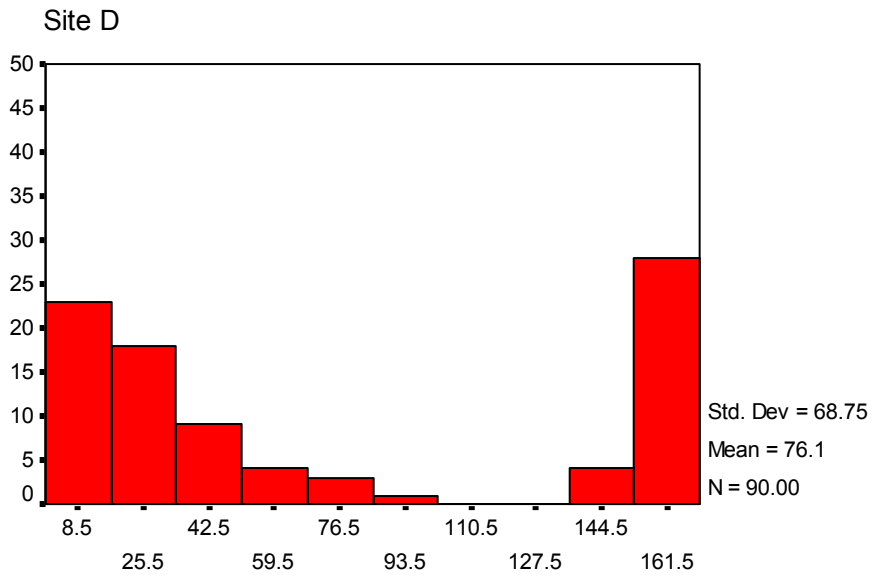
Q8: On average, how many hours of care do you give to the person each week?



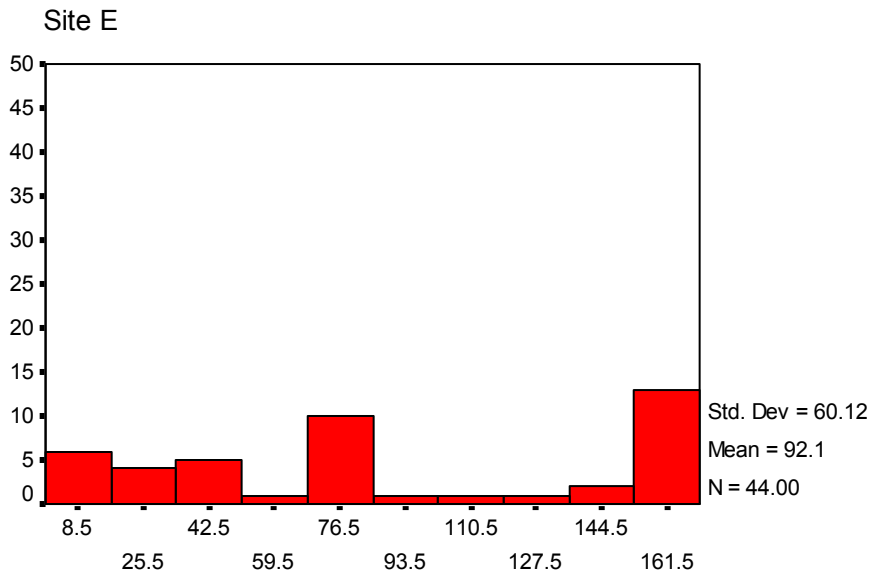
Q8: On average, how many hours of care do you give to the person each week?



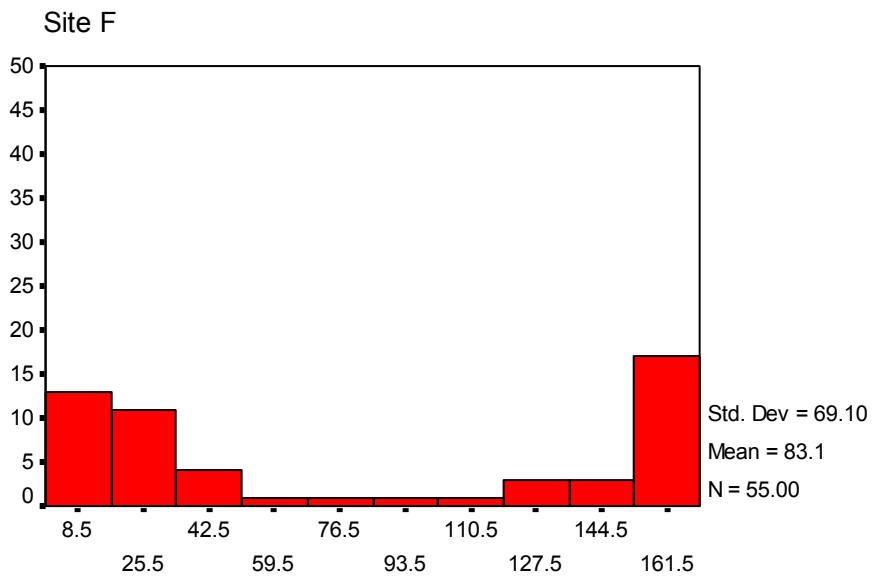
Q8: On average, how many hours of care do you give to the person each week?



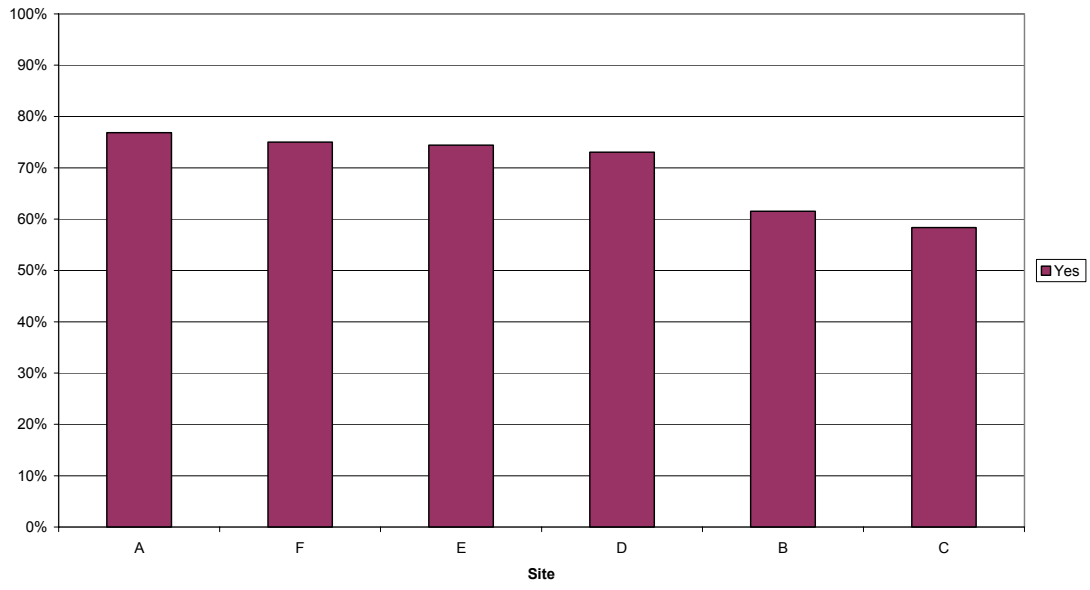
Q8: On average, how many hours of care do you give to the person each week?



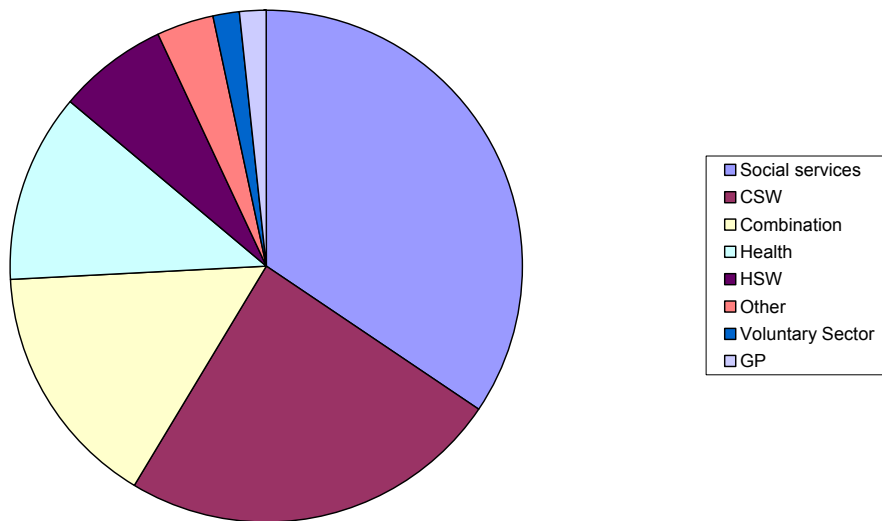
Q8: On average, how many hours of care do you give to the person each week?



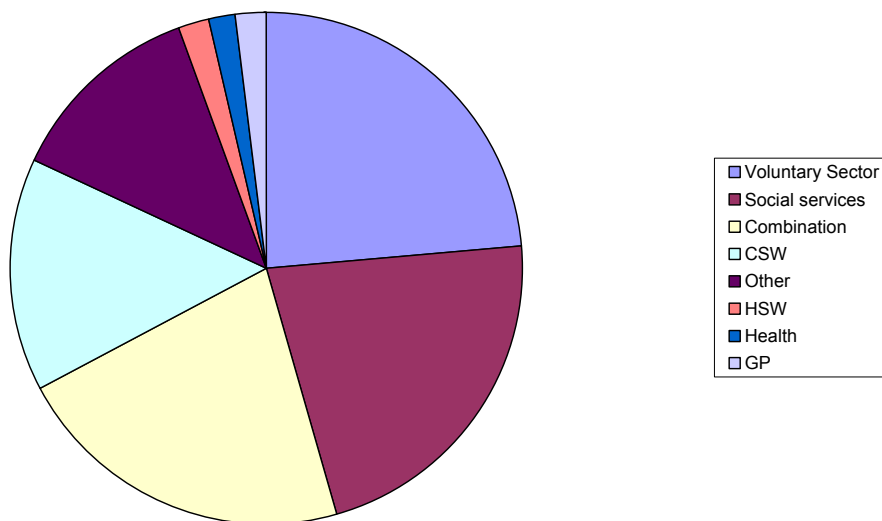
Q9: Has anyone told you what help might be available to help you look after the person cared for?



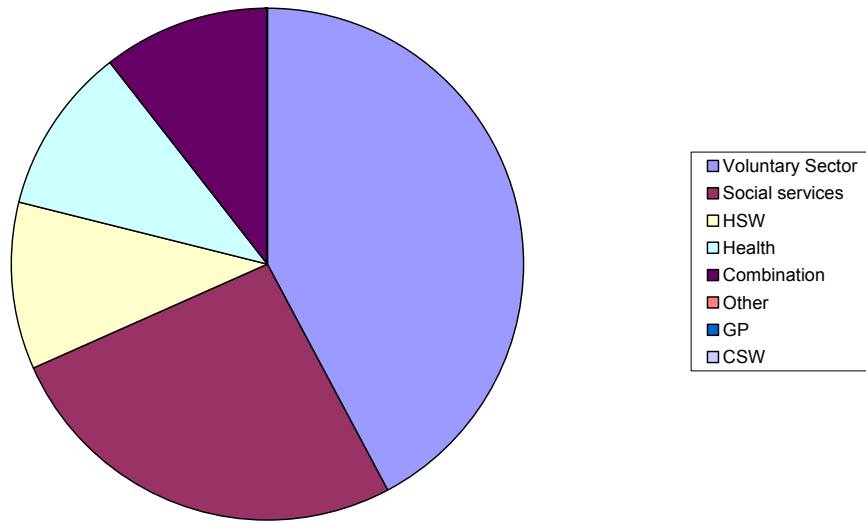
Q10: If 'yes', who? (site A)



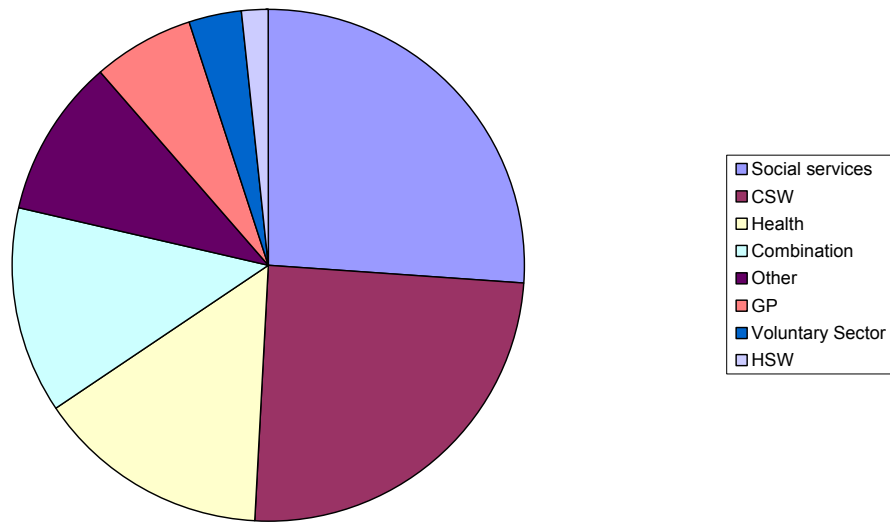
Q10: If 'yes', who? (site B)



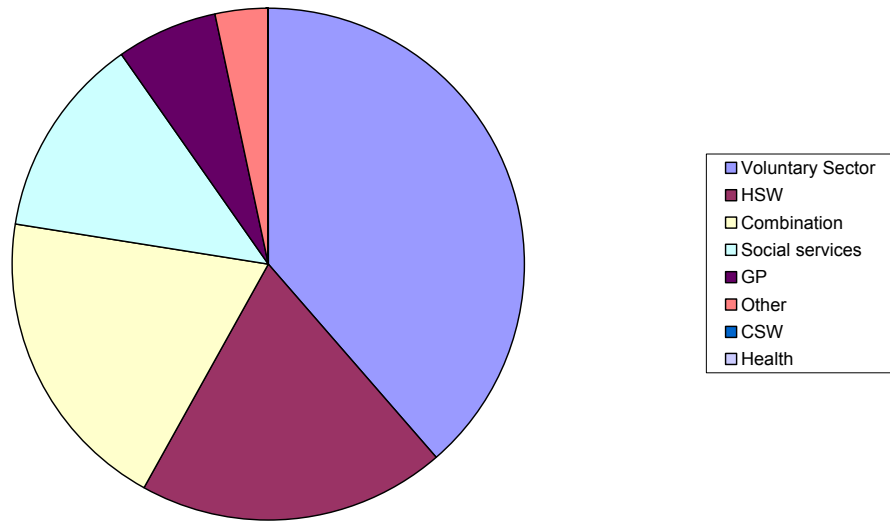
Q10: If 'yes', who? (Site C)



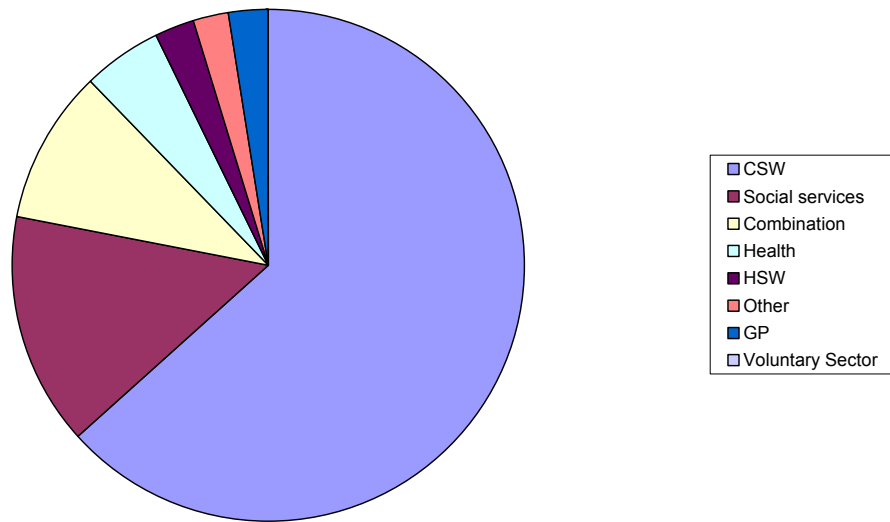
Q10: If 'yes', who? (Site D)



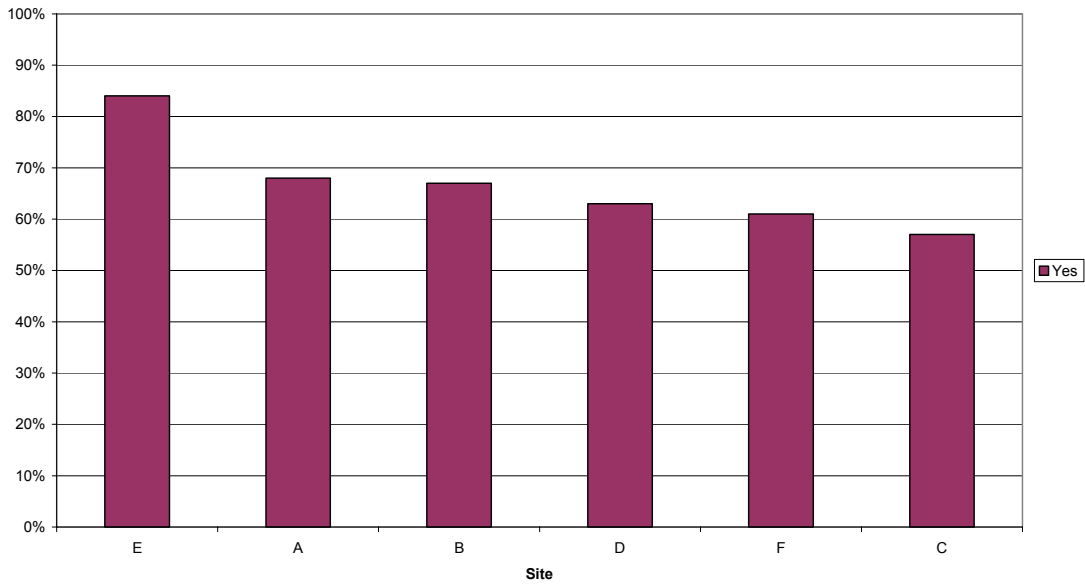
Q10: If 'yes', who? (Site E)



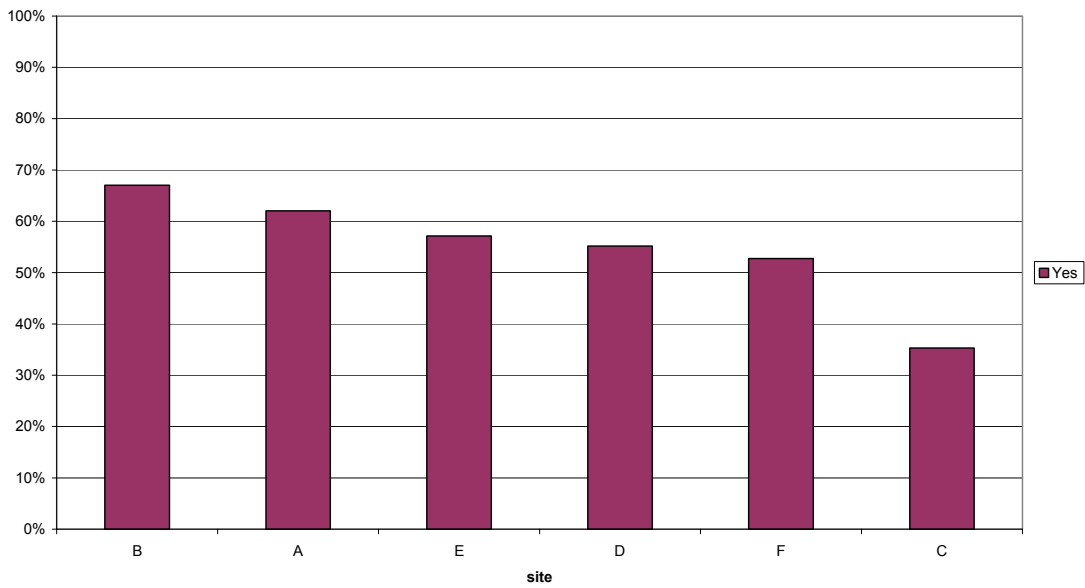
Q10: If 'yes', Who? (Site F)



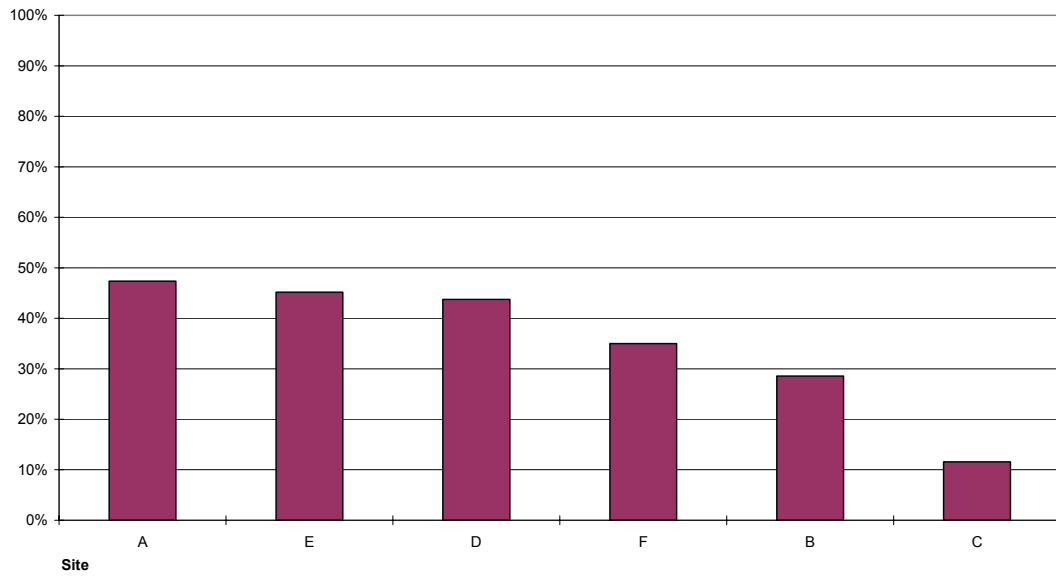
Q12: Has anyone told you what allowances or benefits you might be able to claim?



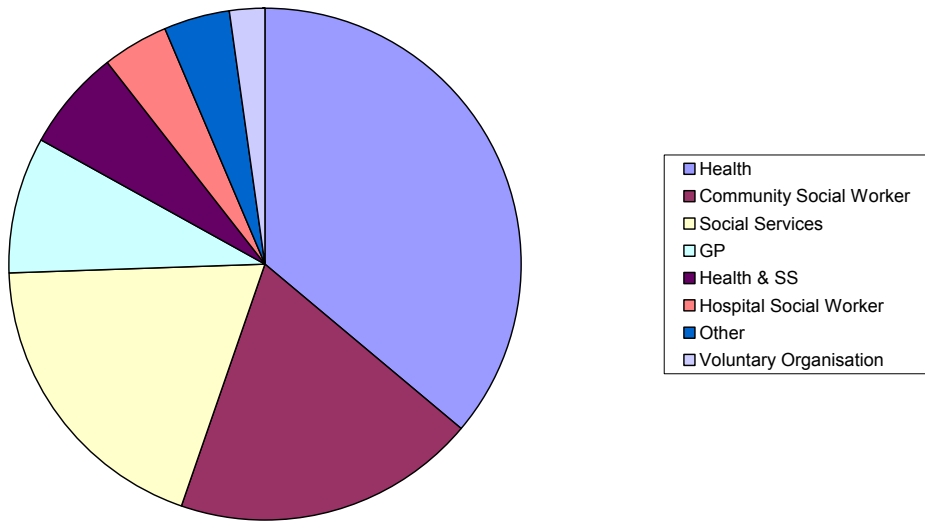
Q13: Have you seen any leaflets or booklets that tell you about this?



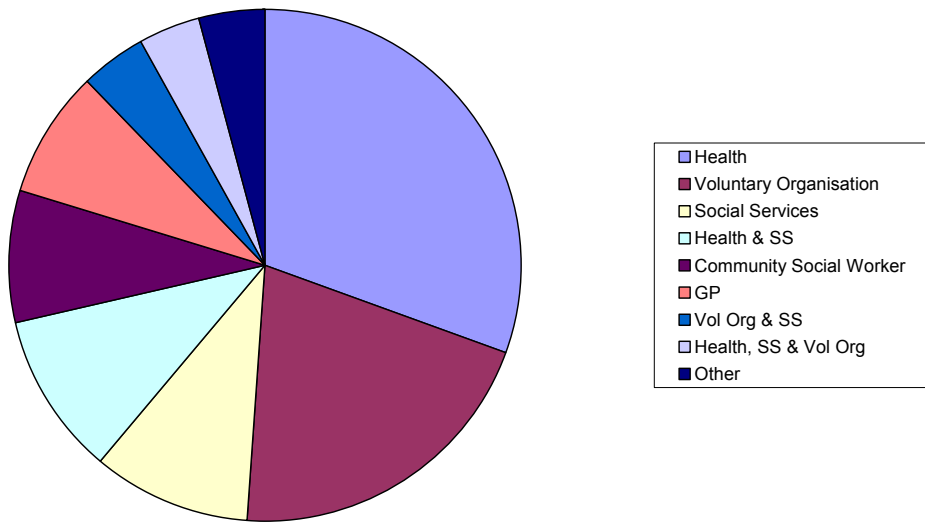
Q14: Has anyone ever given you any information or advice to help you look after the person cared for?



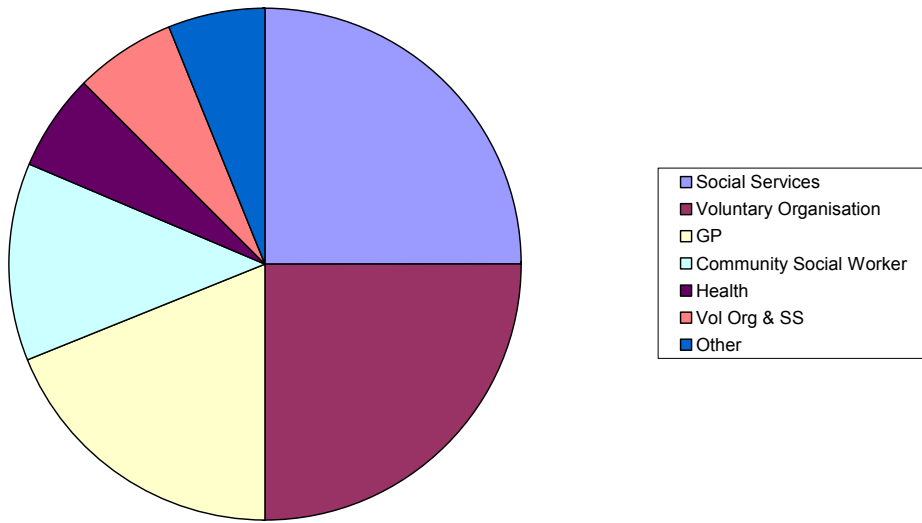
Q15: If 'yes', who did this? (Site A)



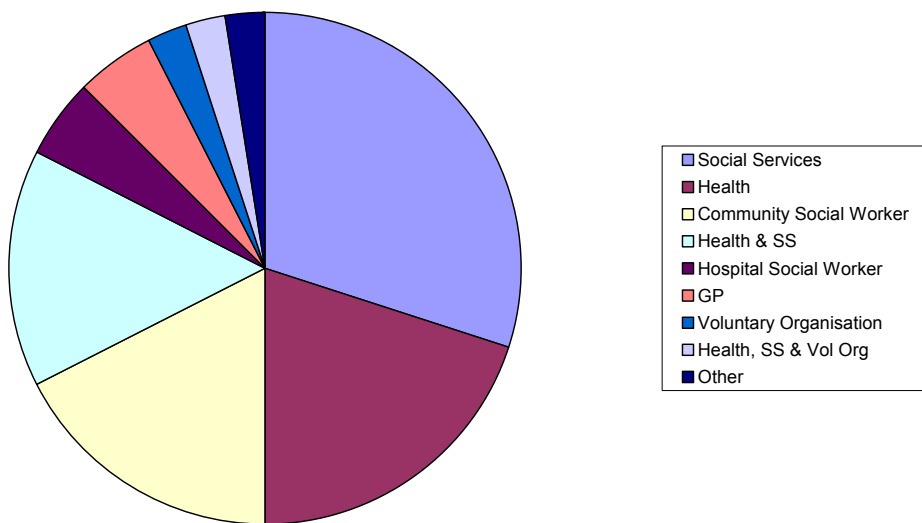
Q15: If 'yes', who did this? (Site B)



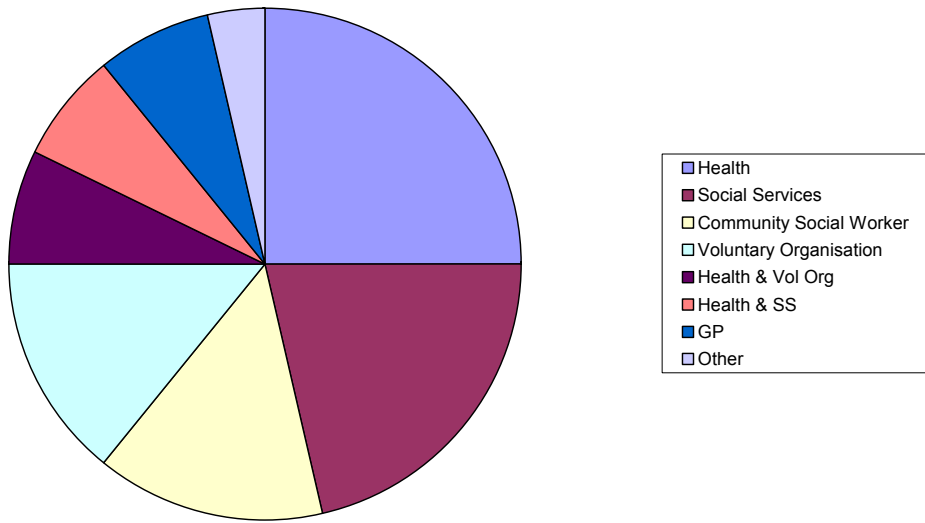
Q15: If 'yes', who did this? (Site C)



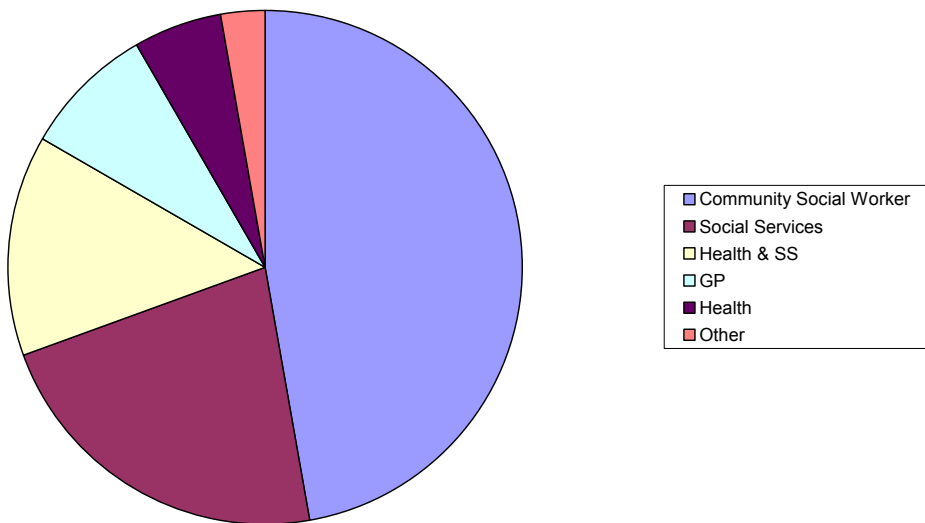
Q15: If 'yes', who did this? (site D)



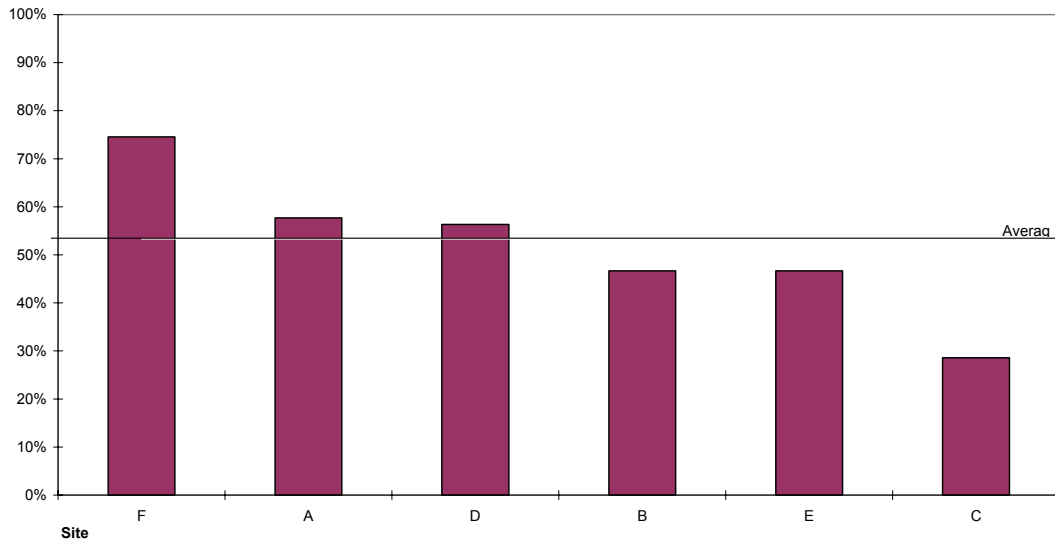
Q15: If 'yes', who did this? (Site E)



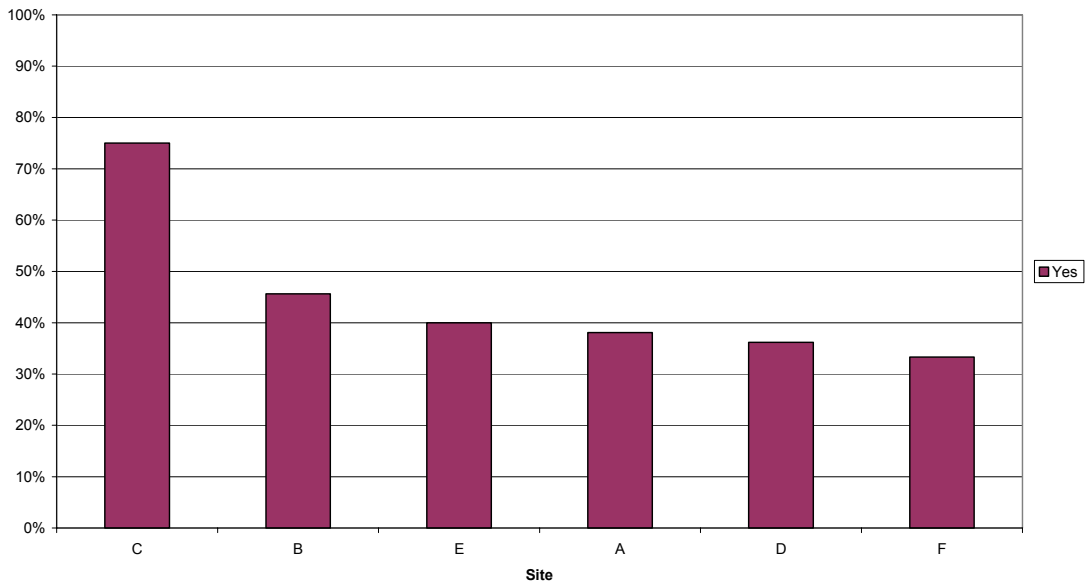
Q15: If 'yes', who did this? (Site F)



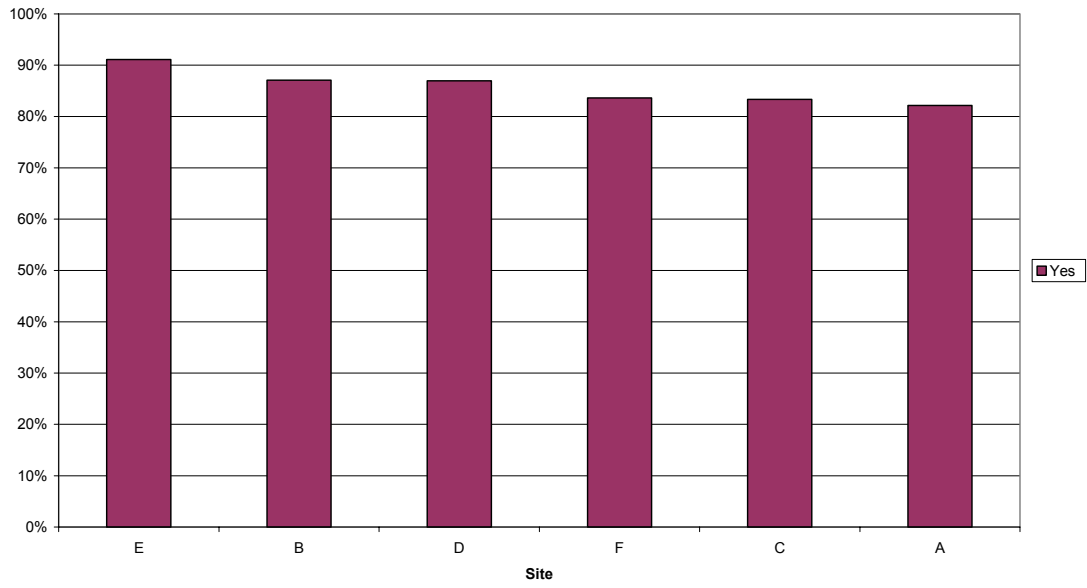
Q17: Have you been told whom to contact if you need urgent help or advice with the care of the person you care for?



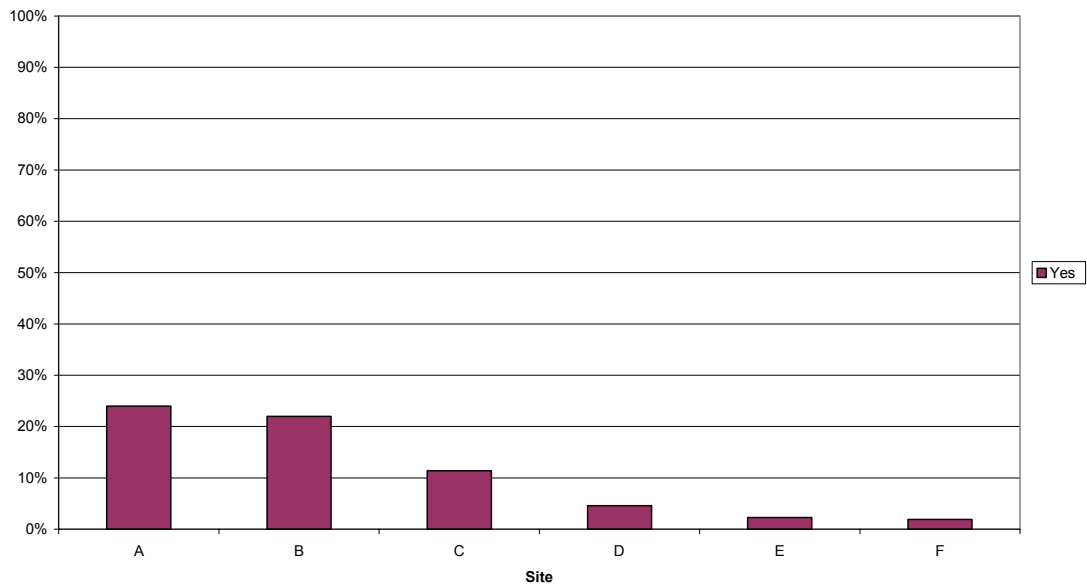
Q18: Are the carer receiving any allowances or benefits?



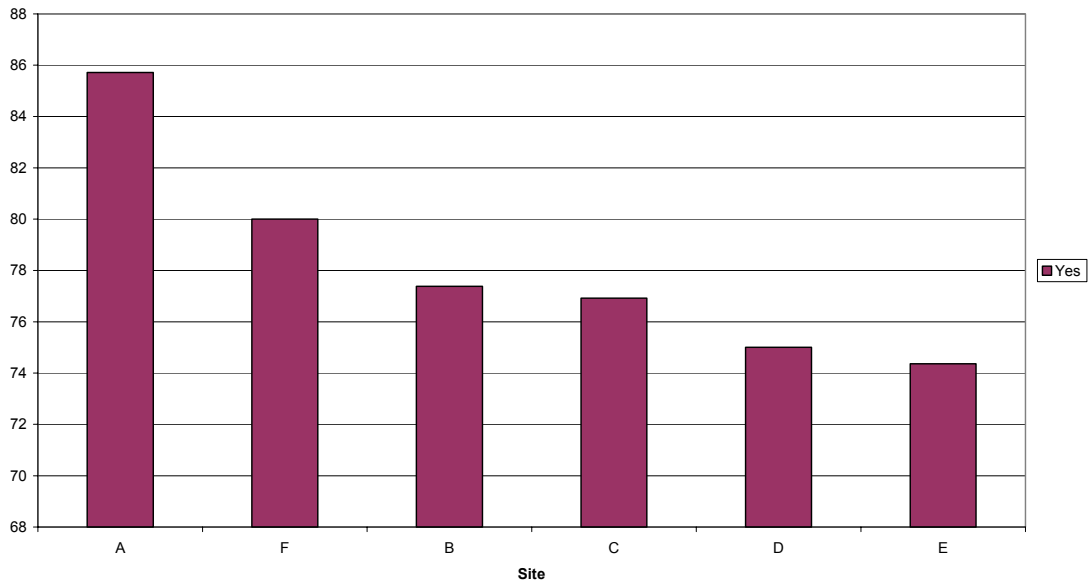
Q20: Is the person you care for receiving any benefits or allowances?



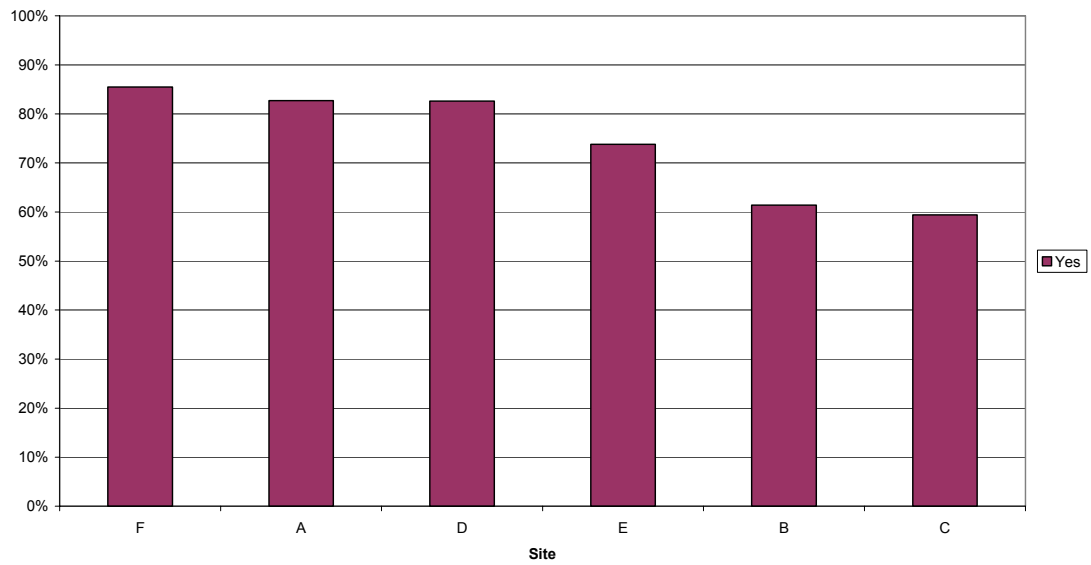
Q22: Does the person you care for mind if their doctor shares information about them with you?



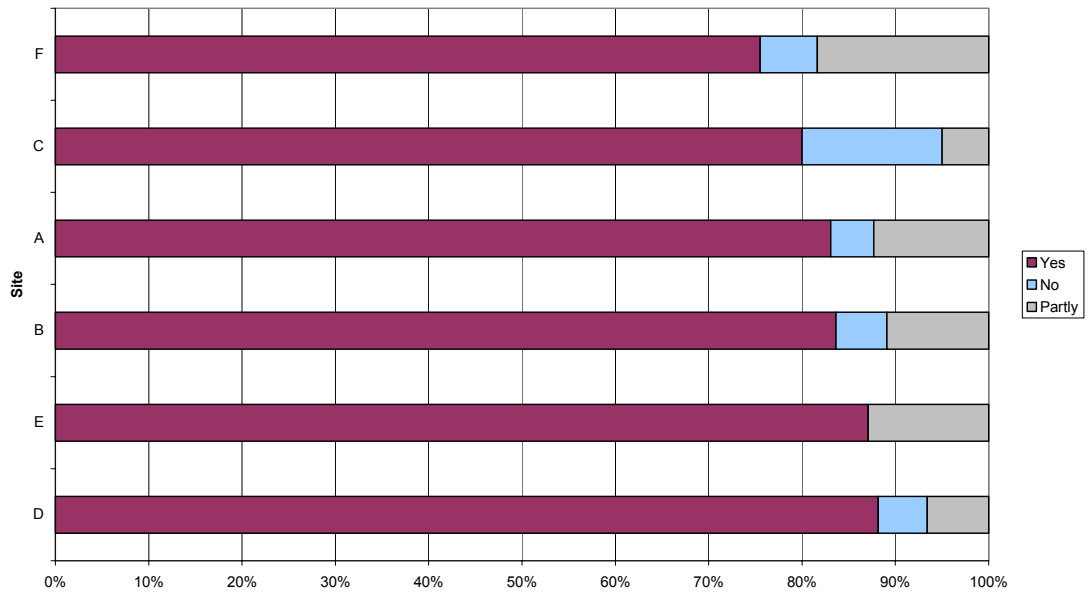
Q23: If 'no', does their doctor actually do this?



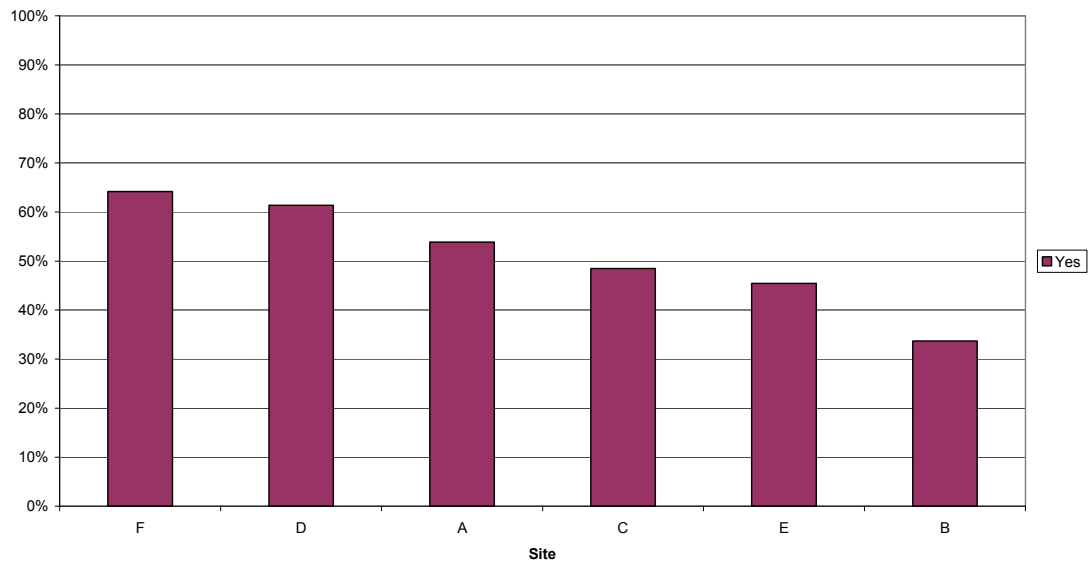
Q24: Has anyone from social services or the NHS (apart from the doctor mentioned in Q22) assessed the needs of the person you care for?



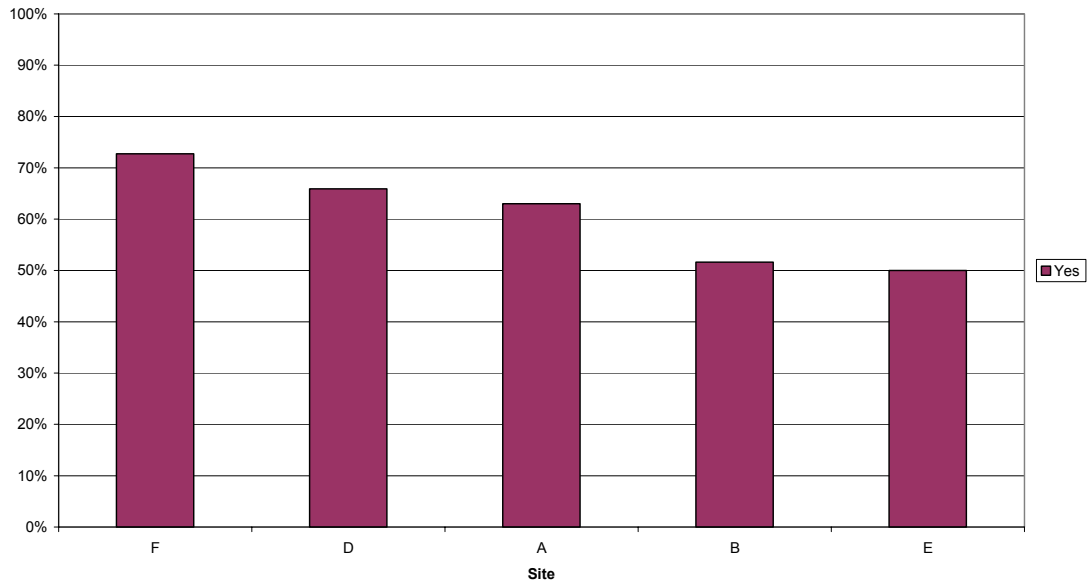
Q25: If 'yes', did they involve you in this?



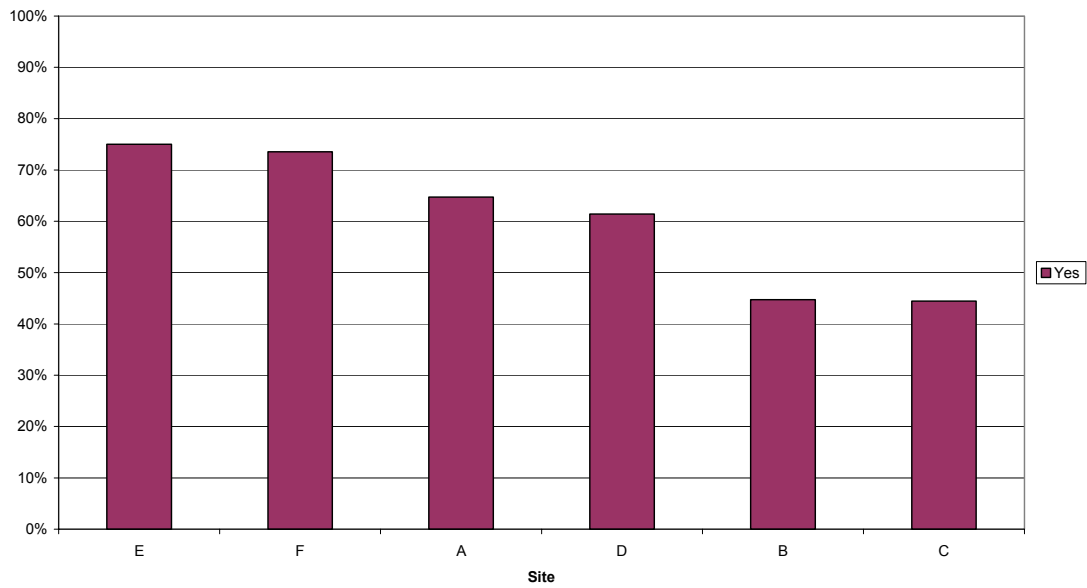
Q26: Has anyone from social services or the NHS asked if you need any help as a carer? (This is sometimes called a carers assessment)



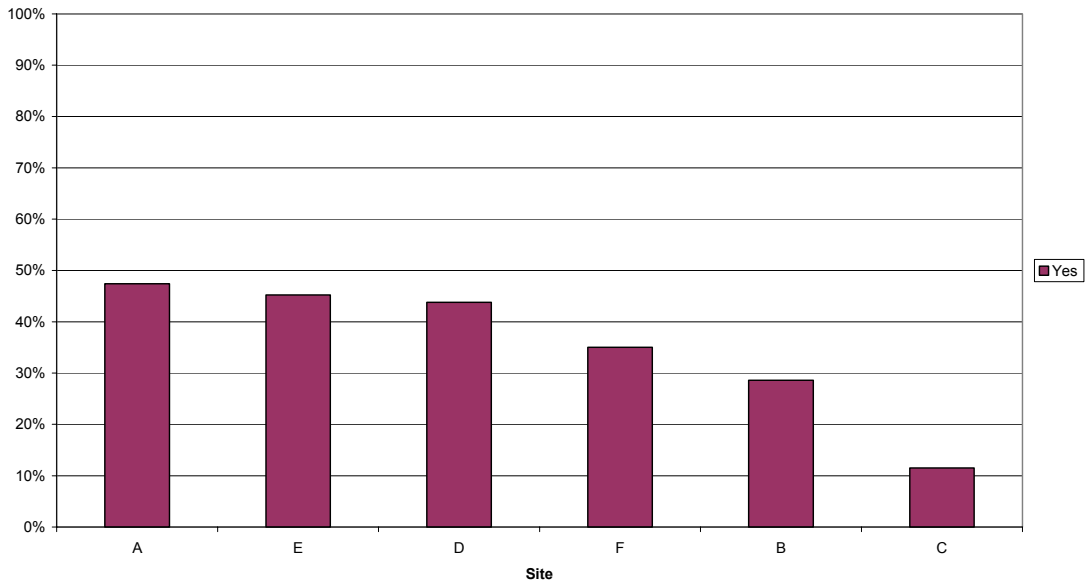
Q27: Has the person you care for been admitted to hospital in the last two Years?



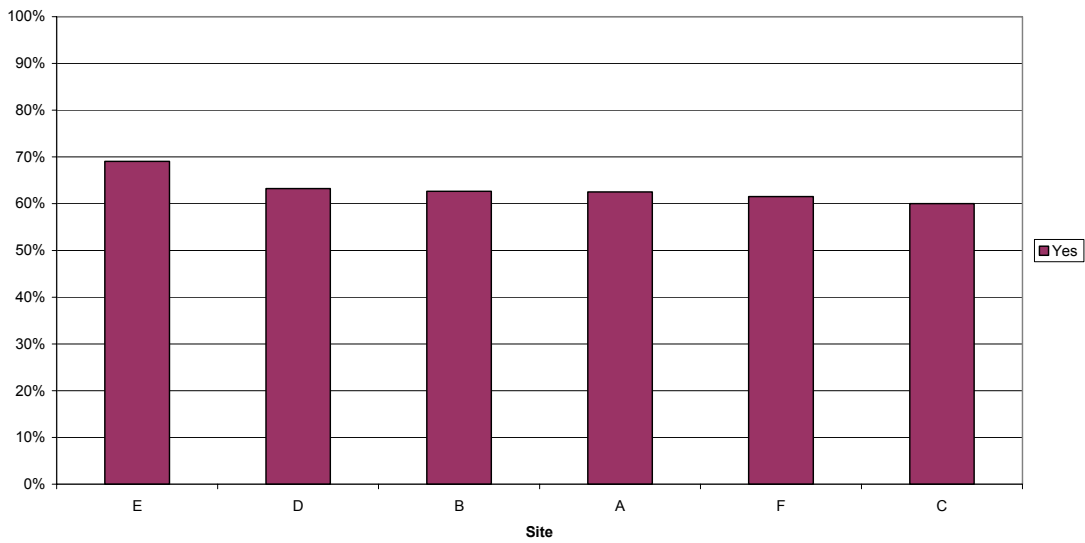
Q28: If 'yes', did anyone involve you in planning for when they were discharged?



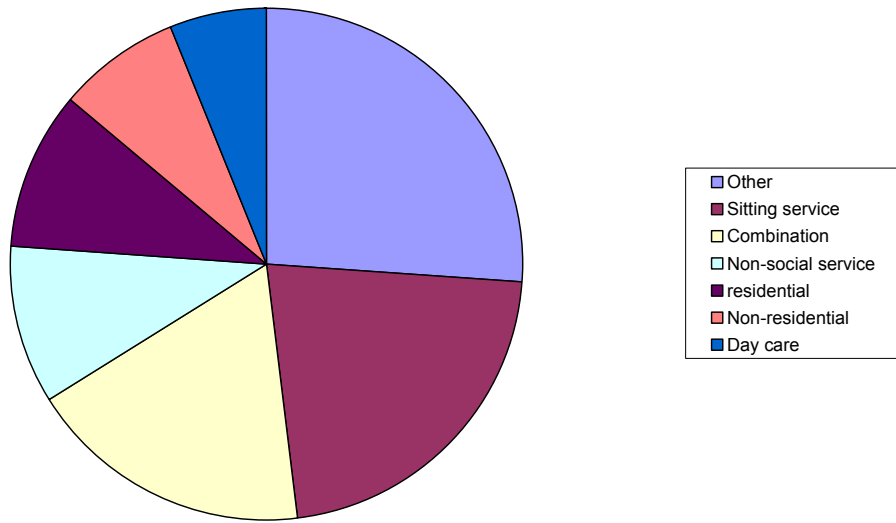
Q29: Did you get any extra help when the person you care for first came home from hospital?



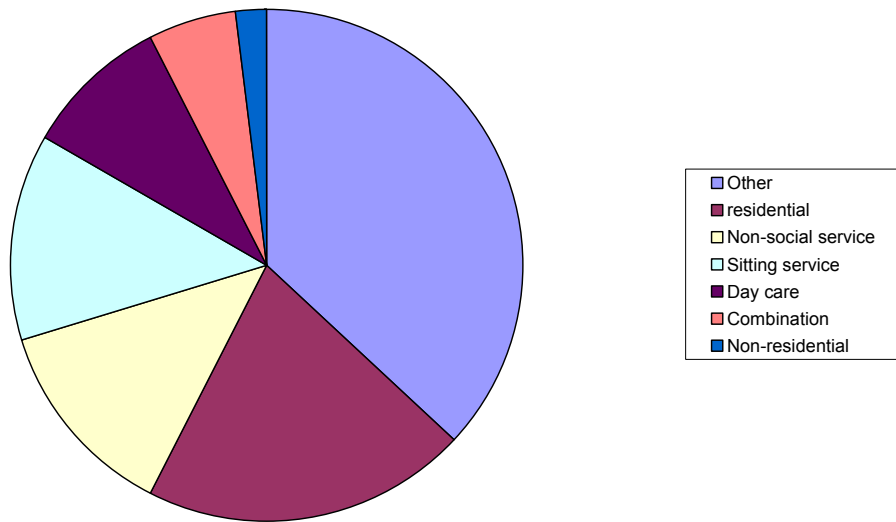
Q30: Have you had any breaks from caring in the last 12 months? (This may include someone coming to sit in the house while you go out, or the person you care for going to a day centre or for a short stay in a residential or nursing home)



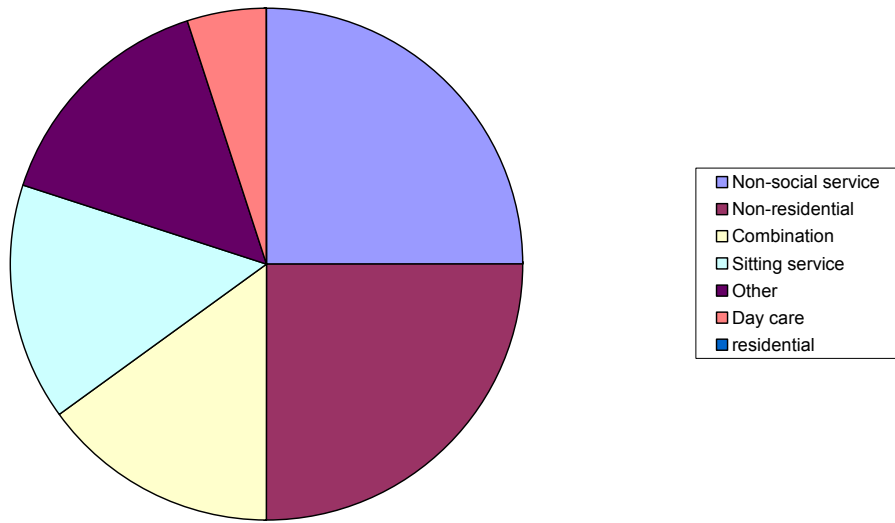
Q31: If 'yes', what kind of breaks were they? (Site A)



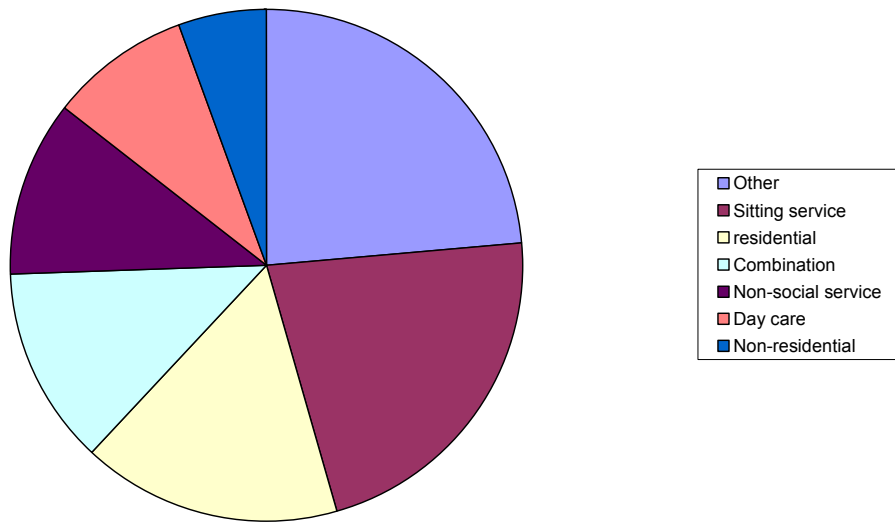
Q31: If 'yes', what kind of breaks were they? (Site B)



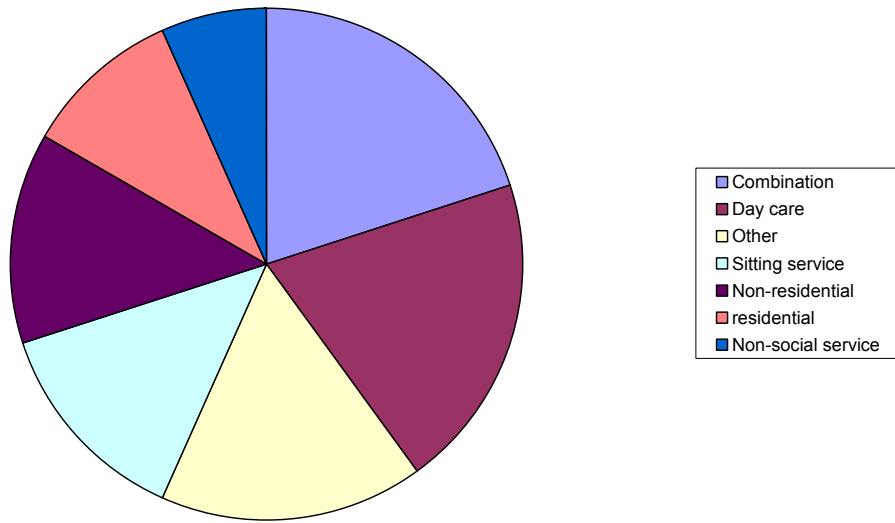
Q31: If 'yes', what kind of breaks were they? (Site C)



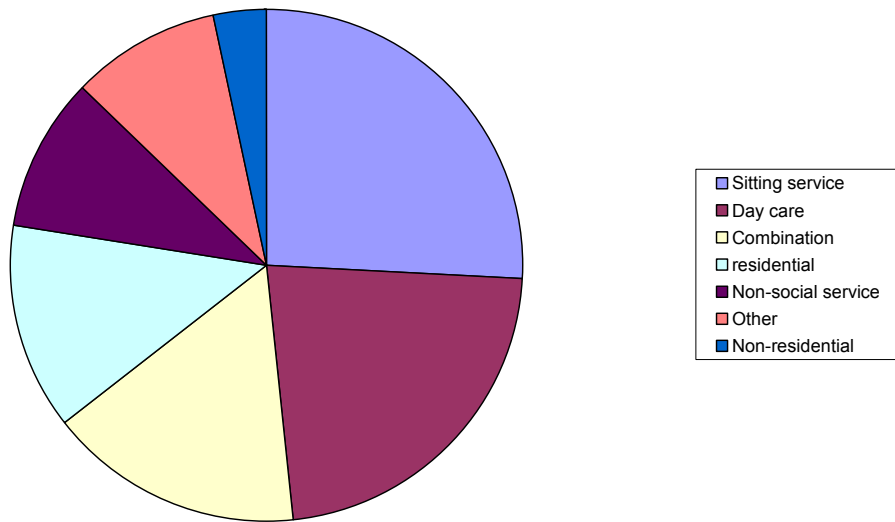
Q31: If 'yes', what kind of breaks were they?(Site D)



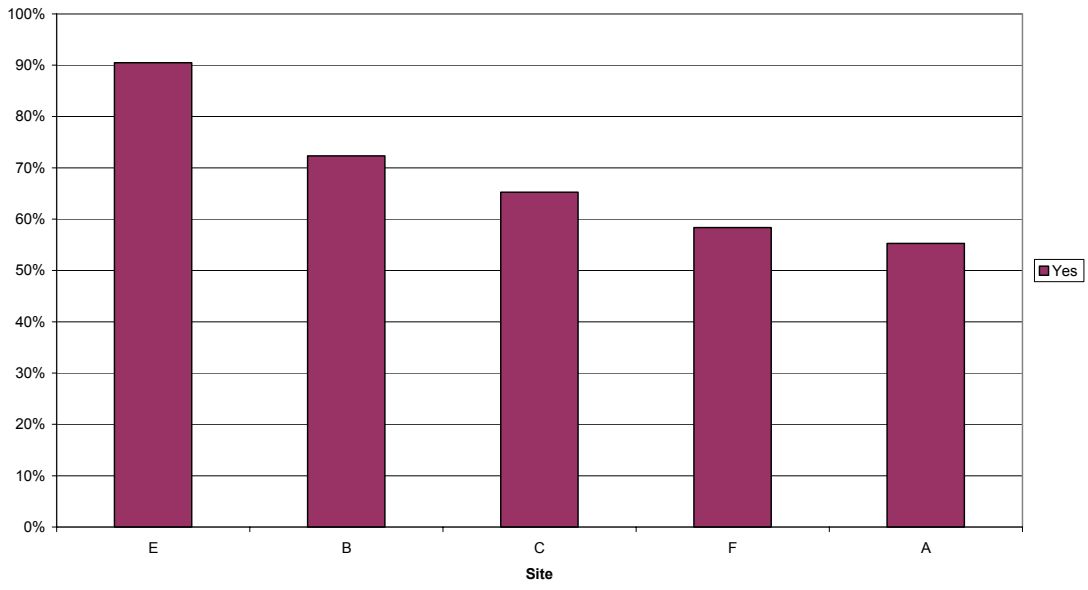
Q31: If 'yes', what kind of breaks were they? (Site E)



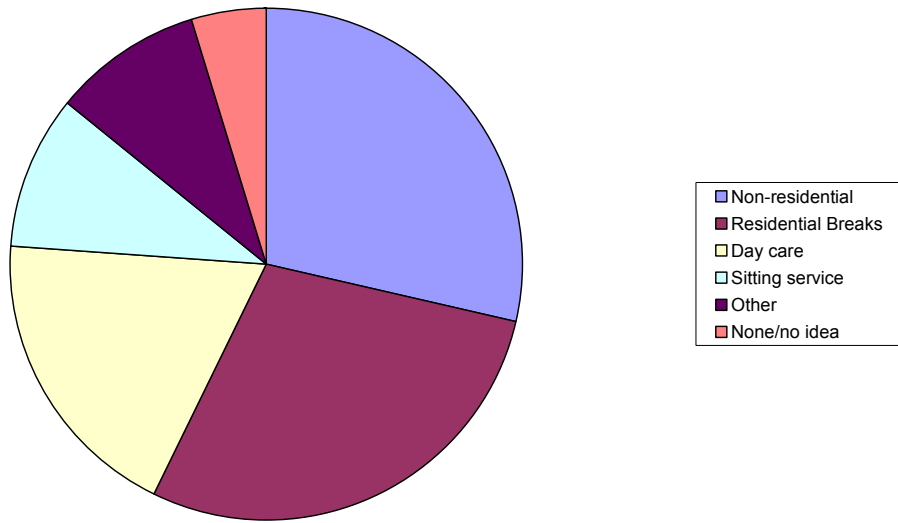
Q31: If 'yes', what kind of breaks were they? (Site F)



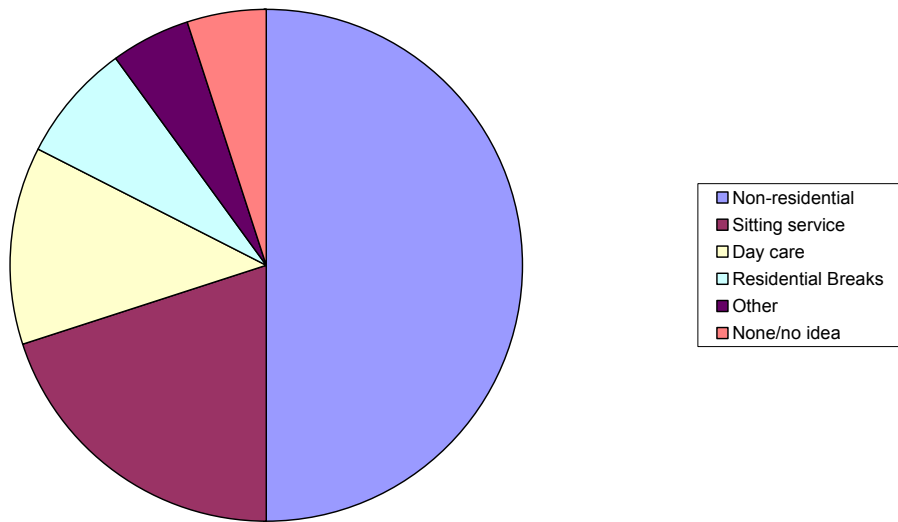
Q33: If 'no', do you feel you would benefit from some kind of break?



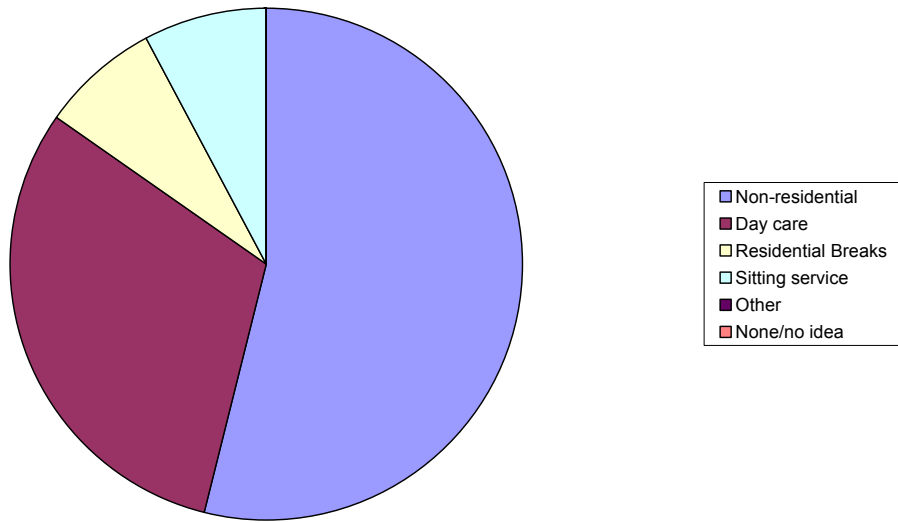
Q34: If 'yes', what kind of breaks would you like to have? (Site A)



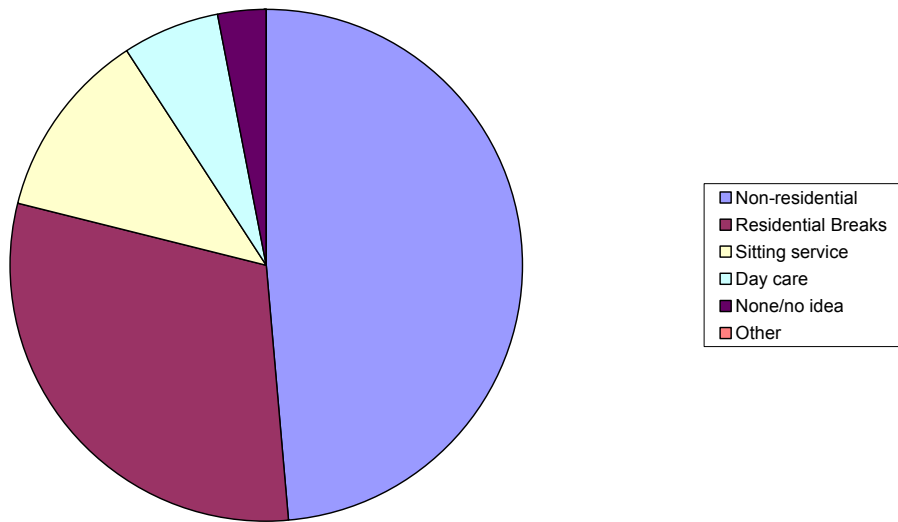
Q34: If 'yes', what kind of breaks would you like to have? (Site B)



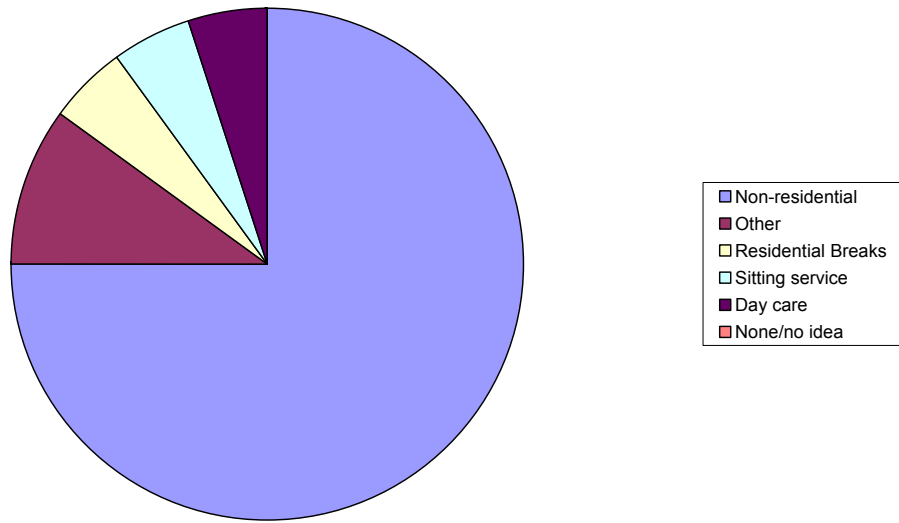
Q34: If 'yes', what kind of breaks would you like to have? (Site C)



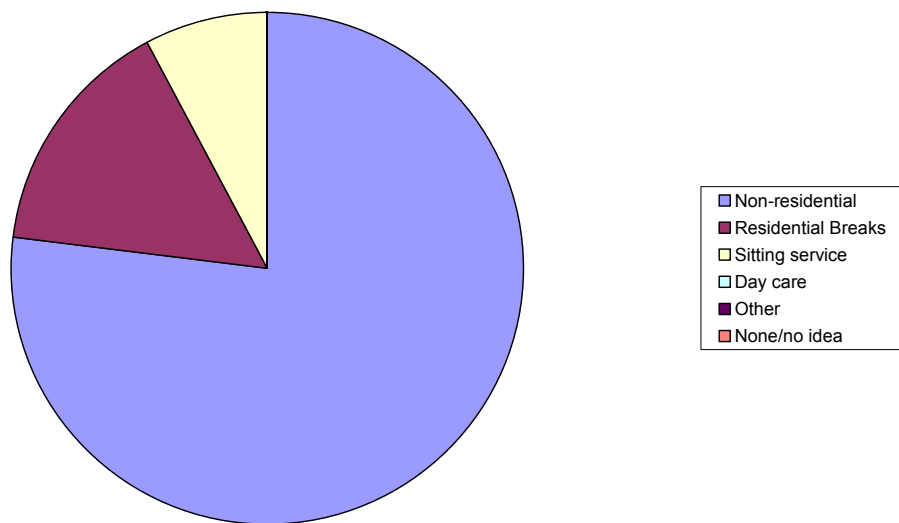
Q34: If 'yes', what kind of breaks would you like to have? (Site D)



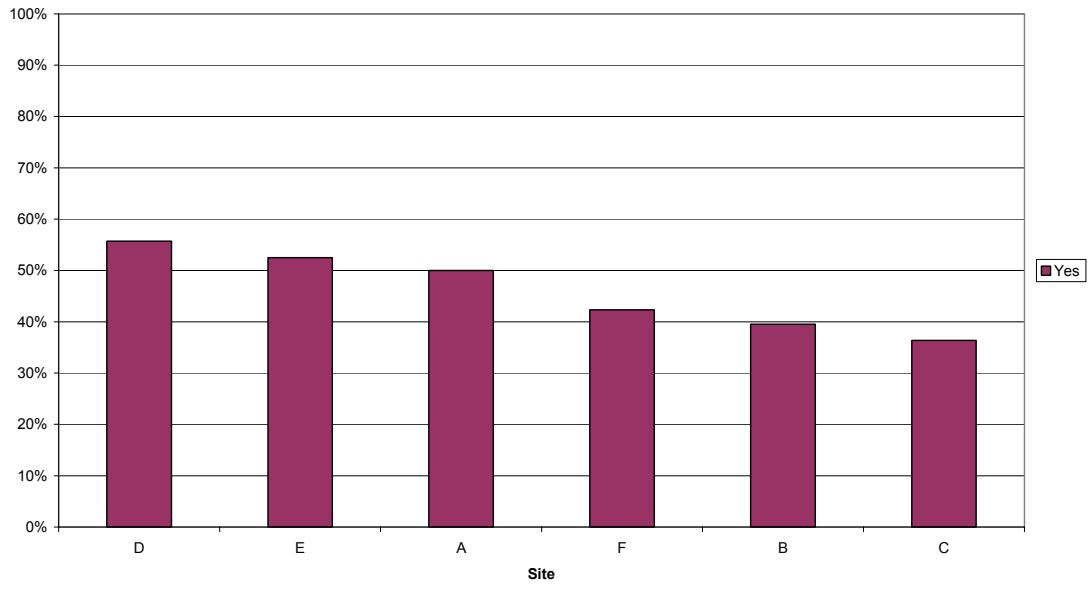
Q34: If 'yes', what kind of breaks would you like to have? (site E)



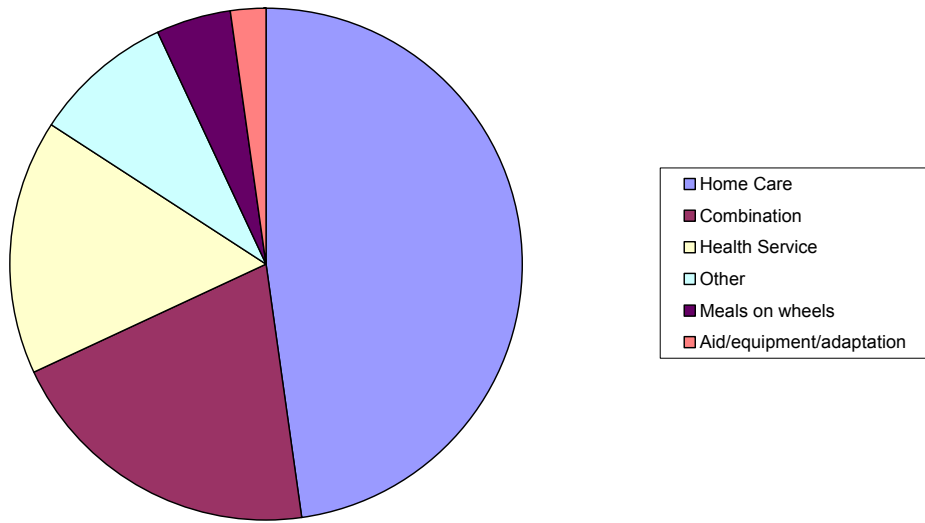
Q34: If 'yes', what kind of breaks would you like to have? (Site F)



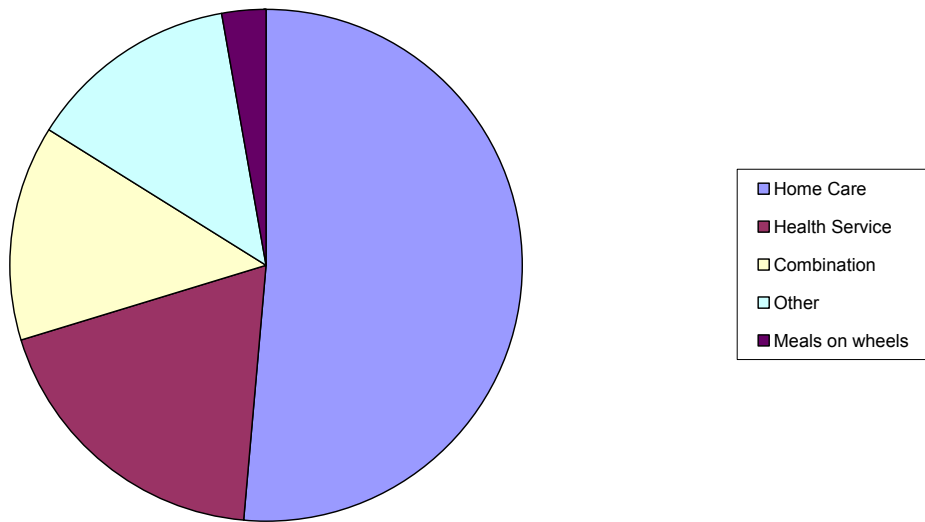
Q35: Do you and the person you care for receive any services other than breaks?



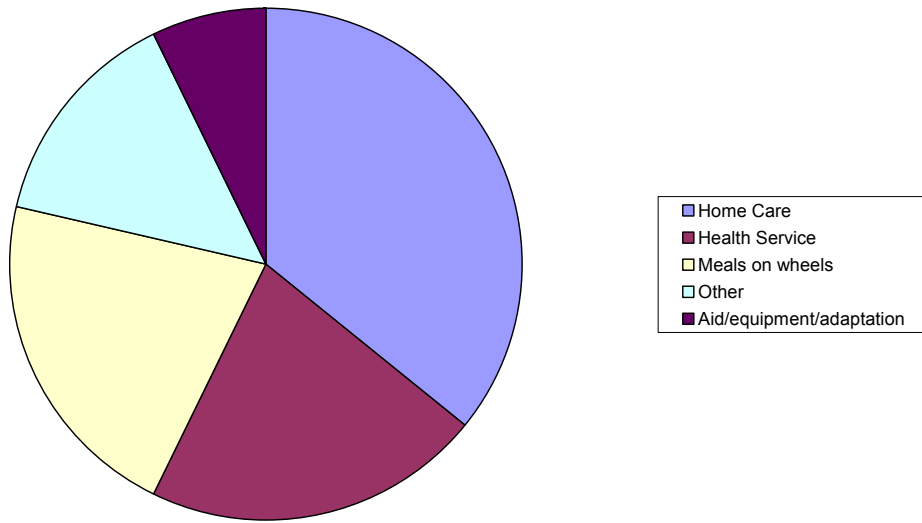
Q36: If 'yes', what are they? (Site A)



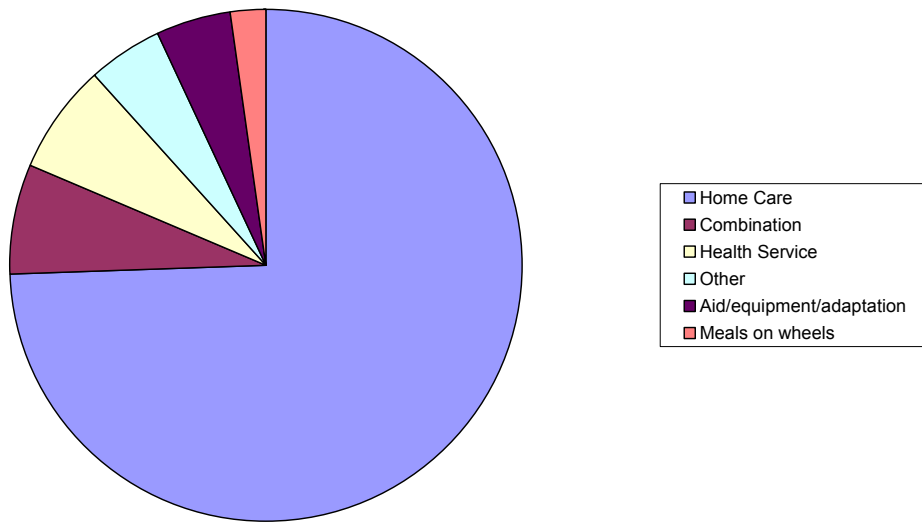
Q36: If 'yes', what are they? (Site B)



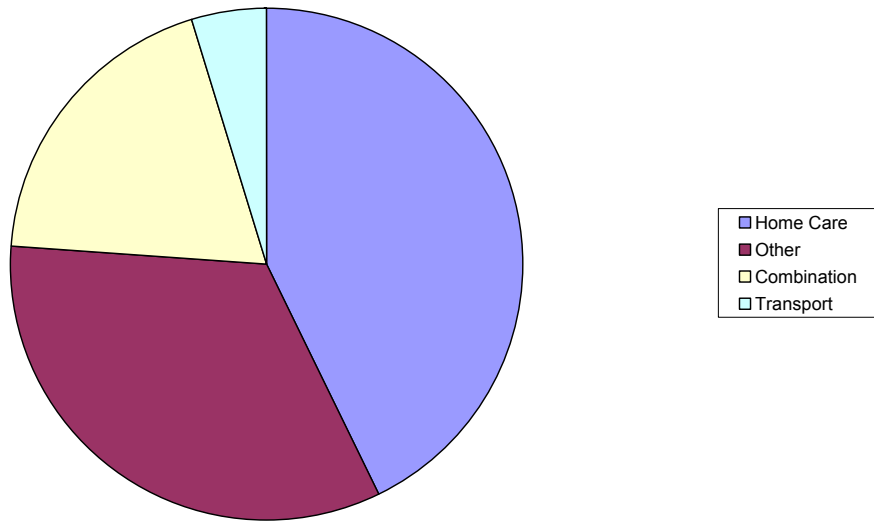
Q36: If 'yes', what are they? (Site C)



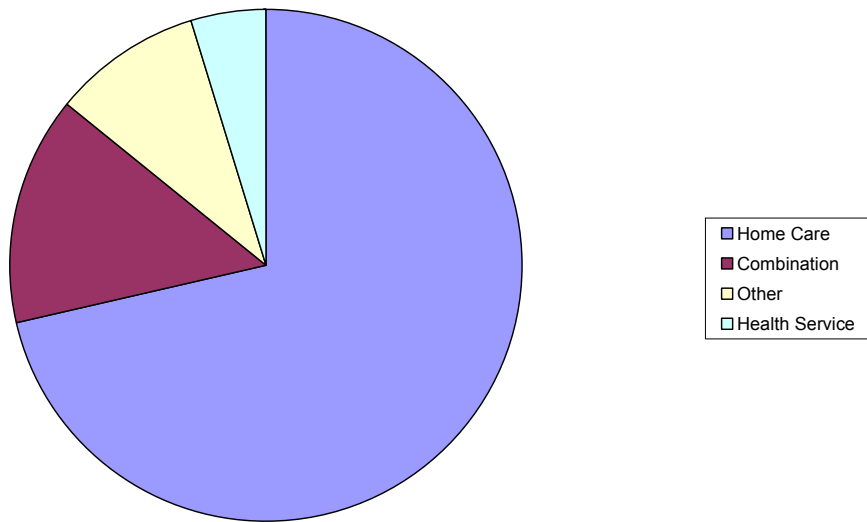
Q36: If 'yes', what are they? (Site D)



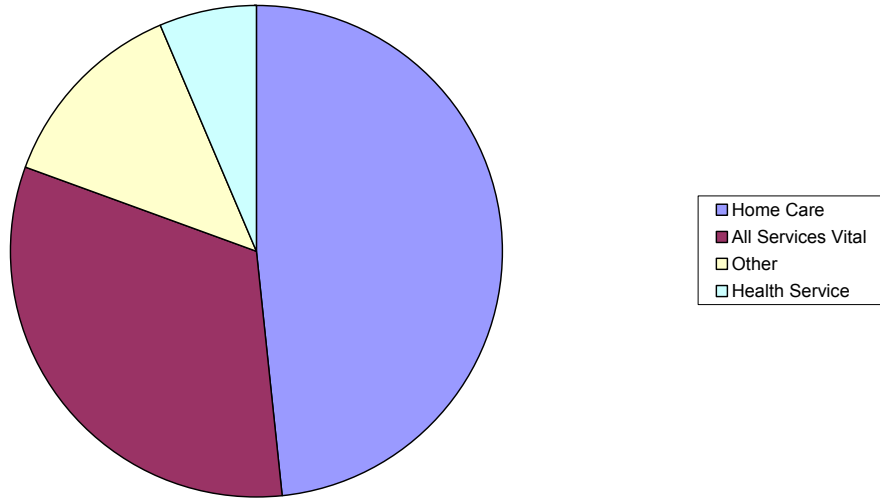
Q36: If 'yes', what are they? (Site E)



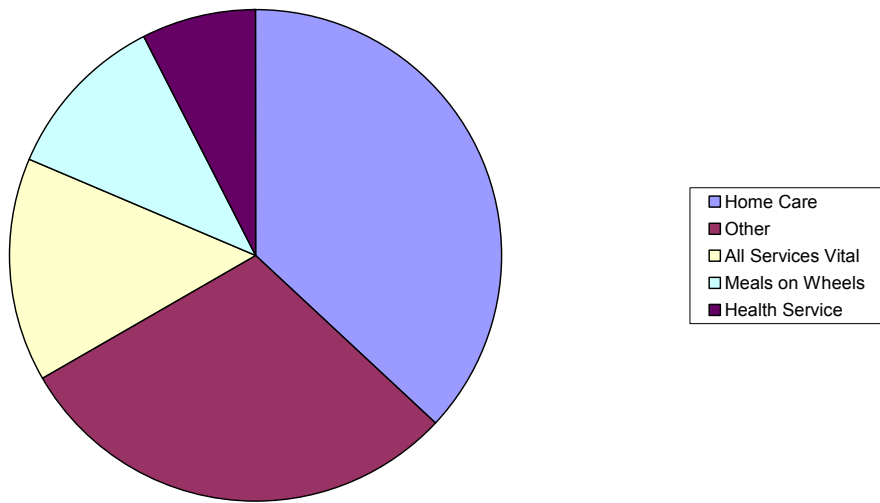
Q36: If 'yes', what are they? (Site F)



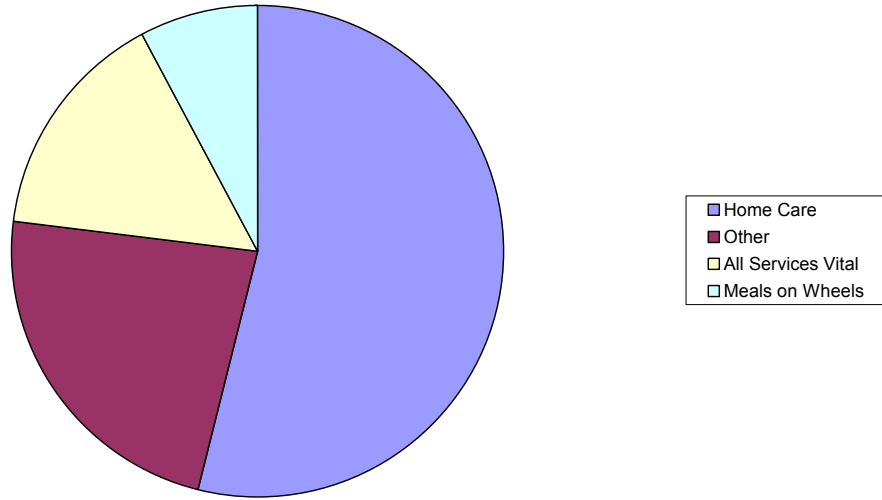
Q37: Which of the services you listed in Q36 above are most important to help you to continue 'caring'? (Site A)



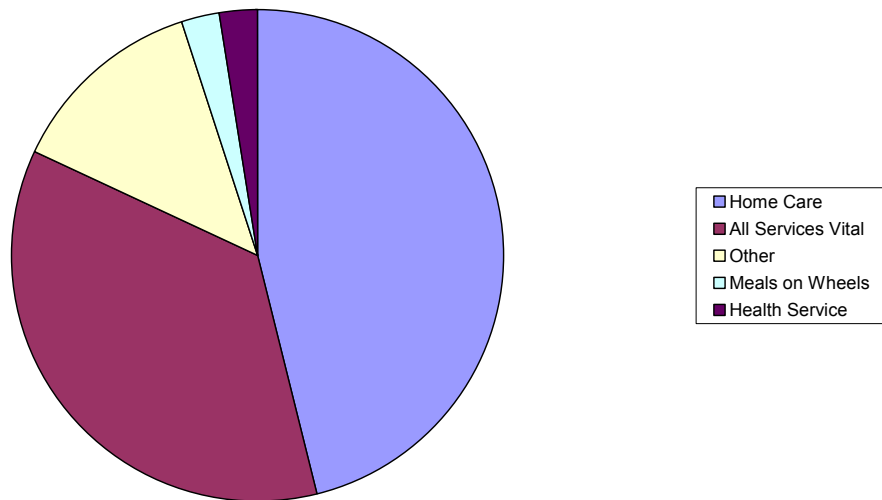
Q37: Which of the services you listed in Q36 above are most important to help you to continue 'caring'? (Site B)



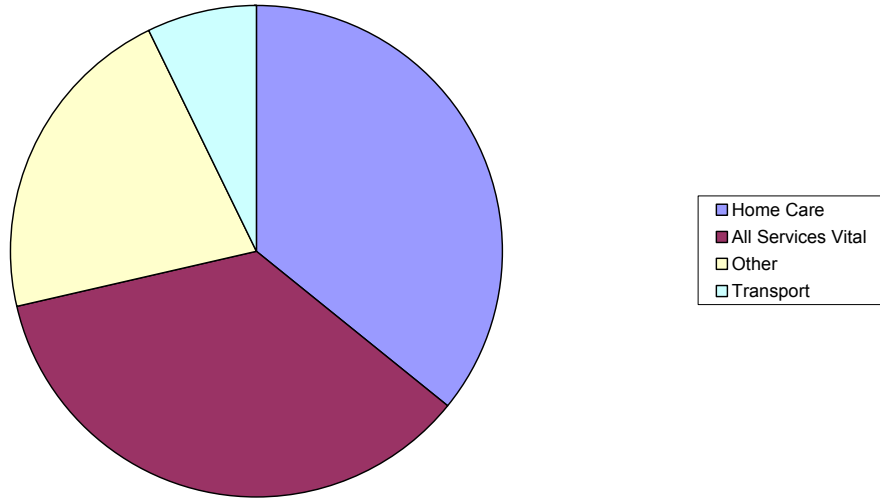
Q37: Which of the services you listed in Q36 above are most important to help you to continue 'caring'? (Site C)



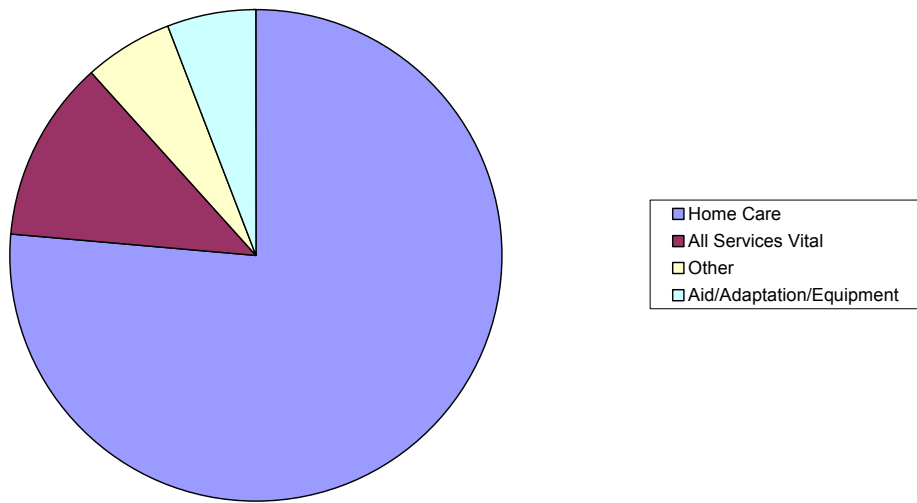
Q37: Which of the services you listed in Q36 above are most important to help you to continue 'caring'? (Site D)



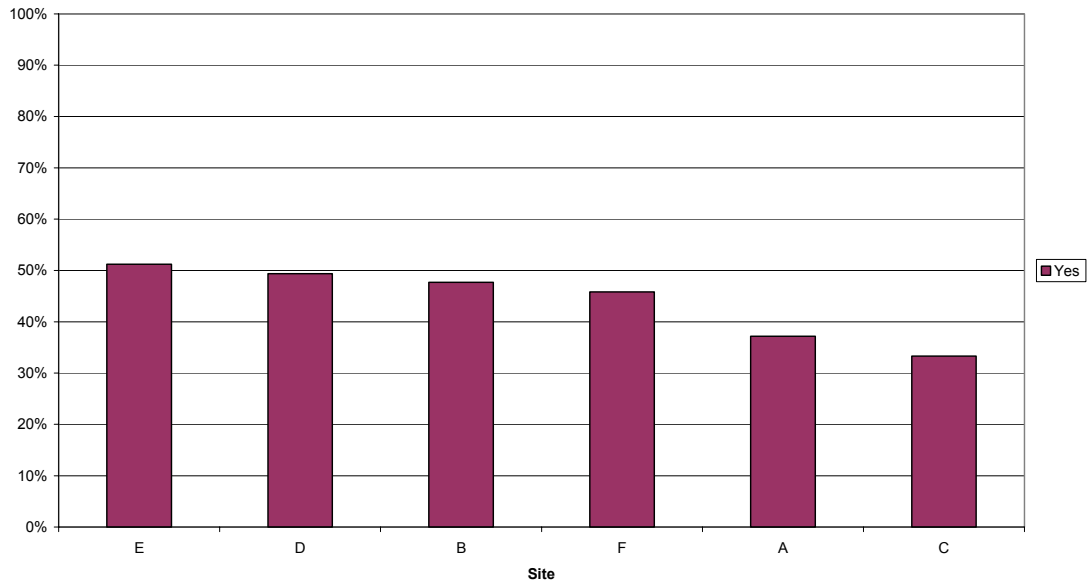
Q37: Which of the services you listed in Q36 above are most important to help you to continue 'caring'? (Site E)



Q37: Which of the services you listed in Q36 above are most important to help you to continue 'caring'? (Site F)



Q40: Have you ever needed to get any help in the evenings and/or weekend?



Q41: If 'yes', did you get it?

